

Para acessar o mainframe:

Crie uma pasta nomeada TN3270.

Baixe o TN3270.zip e descompacte na pasta TN3270.

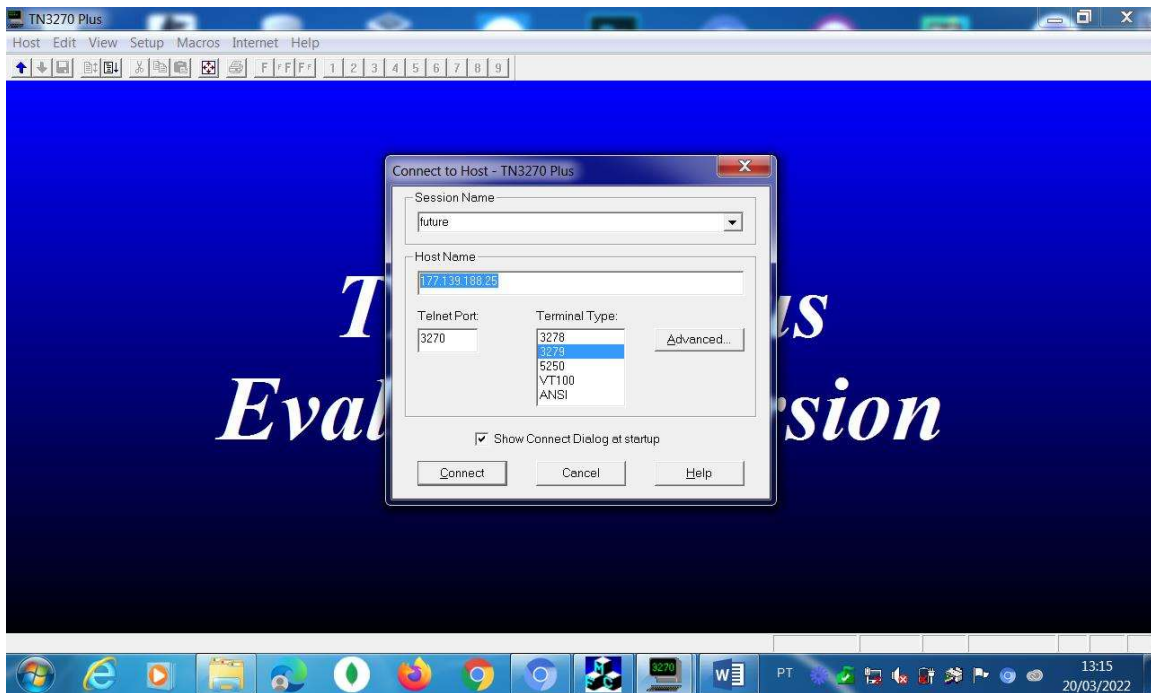
Lembre-se o TN3270 é um ShareWare, portanto em 30 dias ele vencerá a licença, caso queira continuar a utiliza-lo faça o seguinte:

Na pasta C:\TN3270 e delete o arquivo TN3270.DAT.

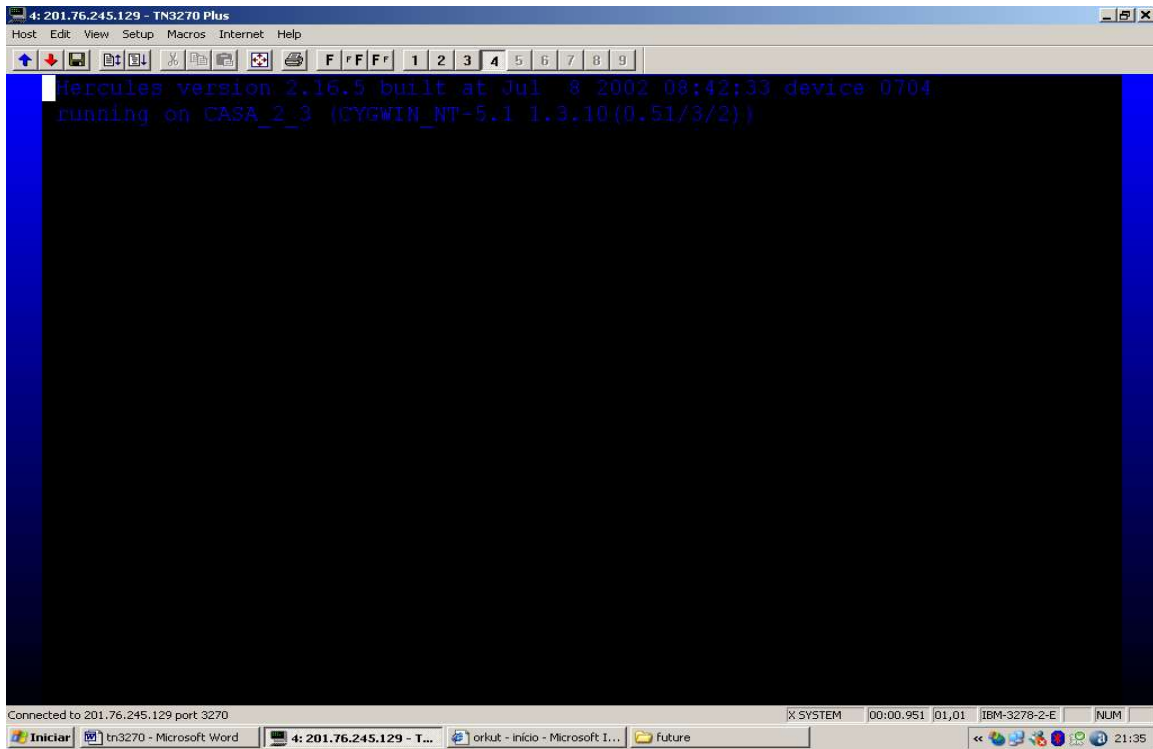
Isso permitirá você utiliza-lo por mais 30 dias.

Você poderá criar um atalho no Windows para executar o programa TN3270.EXE.

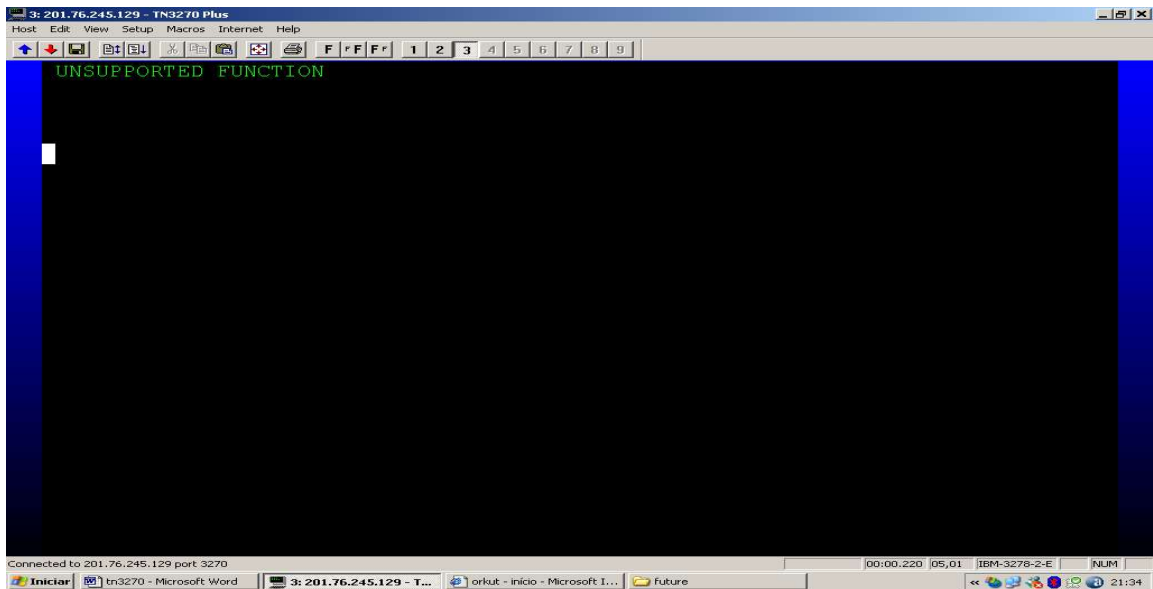
Execute o TN3270.exe.



Digite o IP 177.139.188.25 escolha terminal type, Telnet Porta 3270 e escolha Terminal Type 3279 e click em Conect, claro que você necessita ter Internet.

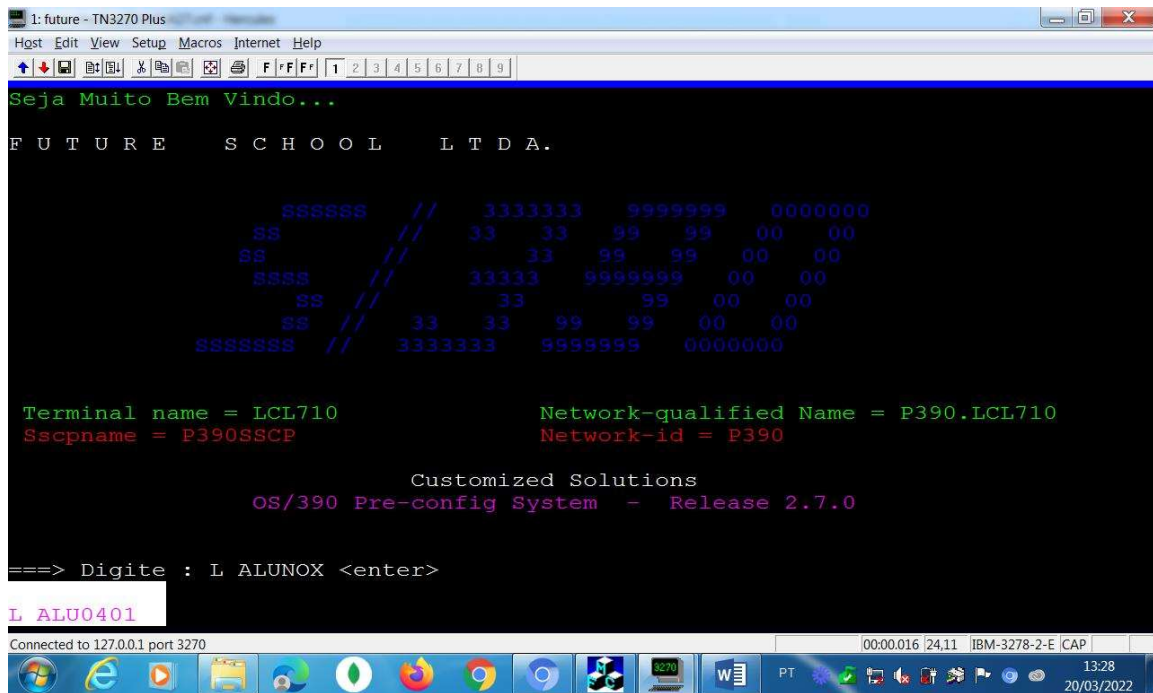


Tecla <enter> atenção demora um pouco ( 1 minuto )



Tecla <ESC>

Na linha de comando digite: L SEUALUNO, neste caso estamos utilizando o ALU0401.



```
1: future - TN3270 Plus
Host Edit View Setup Macros Internet Help
Seja Muito Bem Vindo...
FUTURE SCHOOL LTDA.
          SSSSSS // 3333333 9999999 0000000
         SS      33 33 99 99 00 00
        SS      33 33 99 99 00 00
       SSSS     33333 9999999 00 00
      SS       33    99 00 00
     SS       33 33 99 99 00 00
    SSSSSSS // 3333333 9999999 0000000

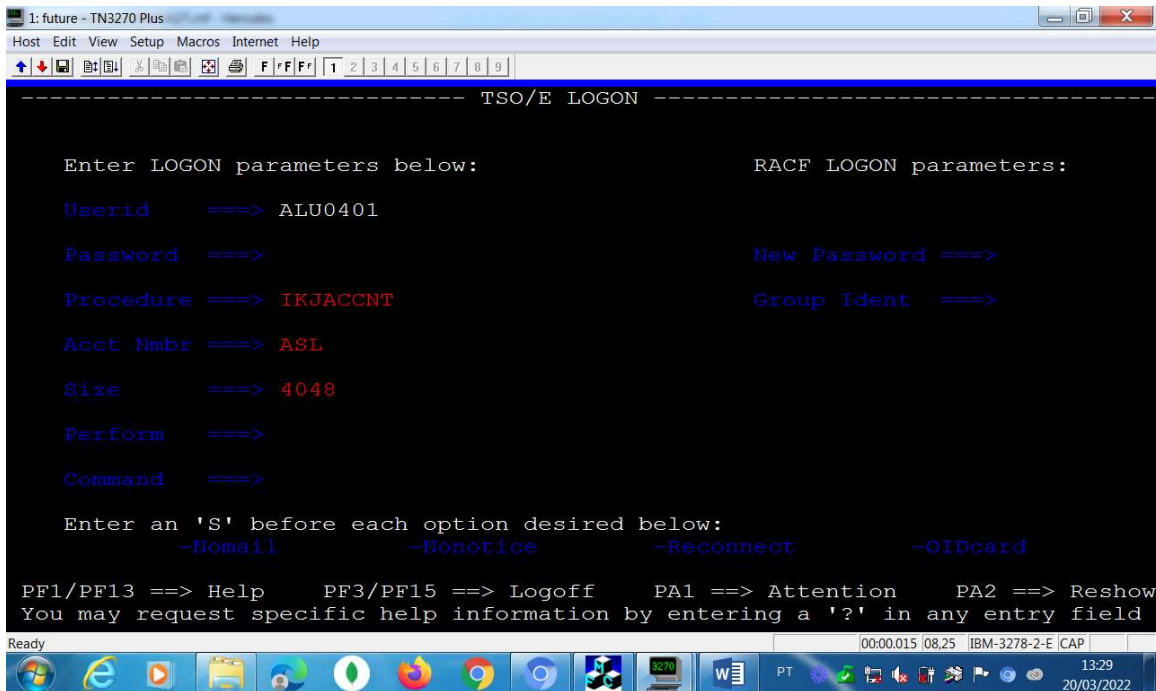
Terminal name = LCL710           Network-qualified Name = P390.LCL710
Sscpname = P390SSCP             Network-id = P390

Customized Solutions
OS/390 Pre-config System - Release 2.7.0

===> Digite : L ALUNOX <enter>
L ALU0401
```

Connected to 127.0.0.1 port 3270 00:00.016 | 24.11 IBM-3278-2-E | CAP 13:28 20/03/2022

Digite a senha:



```
1: future - TN3270 Plus
Host Edit View Setup Macros Internet Help
----- TSO/E LOGON -----

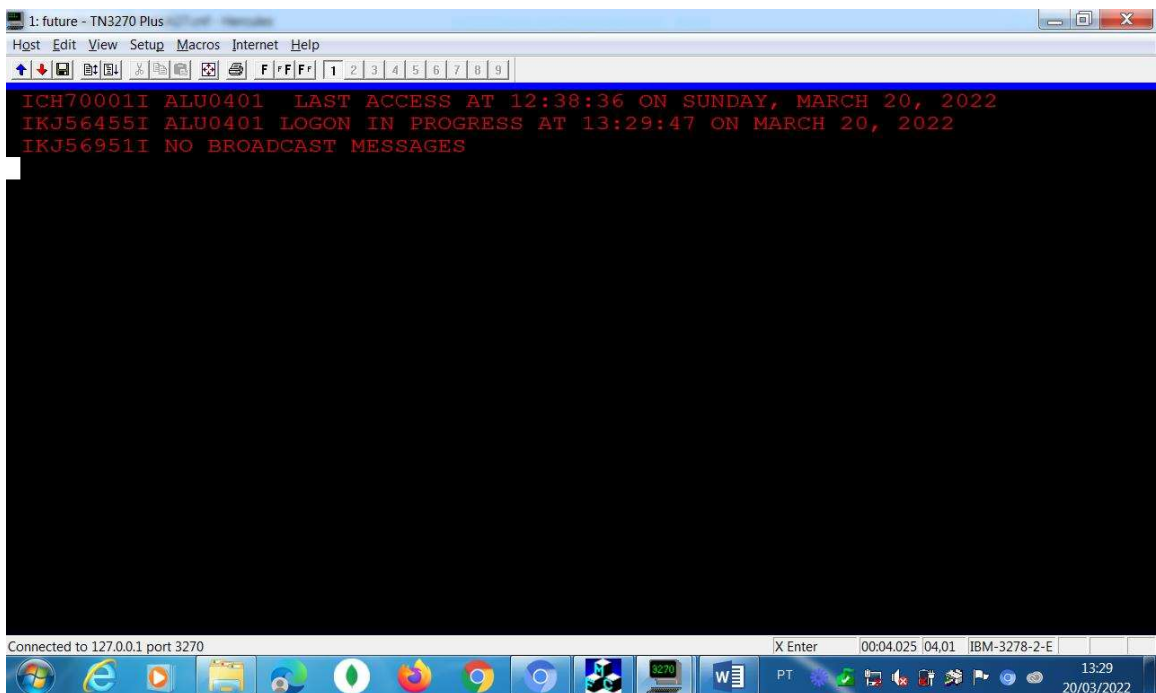
Enter LOGON parameters below:
Userid      ==> ALU0401
Password    ==>
Procedure   ==> IKJACCNT
Acct Nbr   ==> ASL
Size        ==> 4048
Perform     ==>
Command     ==>

RACF LOGON parameters:
New Password ==>
Group Ident  ==>

Enter an 'S' before each option desired below:
-Nomail      -Nonotice    -Reconnect    -OIDcard

PF1/PF13 ==> Help    PF3/PF15 ==> Logoff    PA1 ==> Attention    PA2 ==> Reshow
You may request specific help information by entering a '?' in any entry field

Ready
00:00.015 08.25 IBM-3278-2-E CAP 13:29 20/03/2022
```

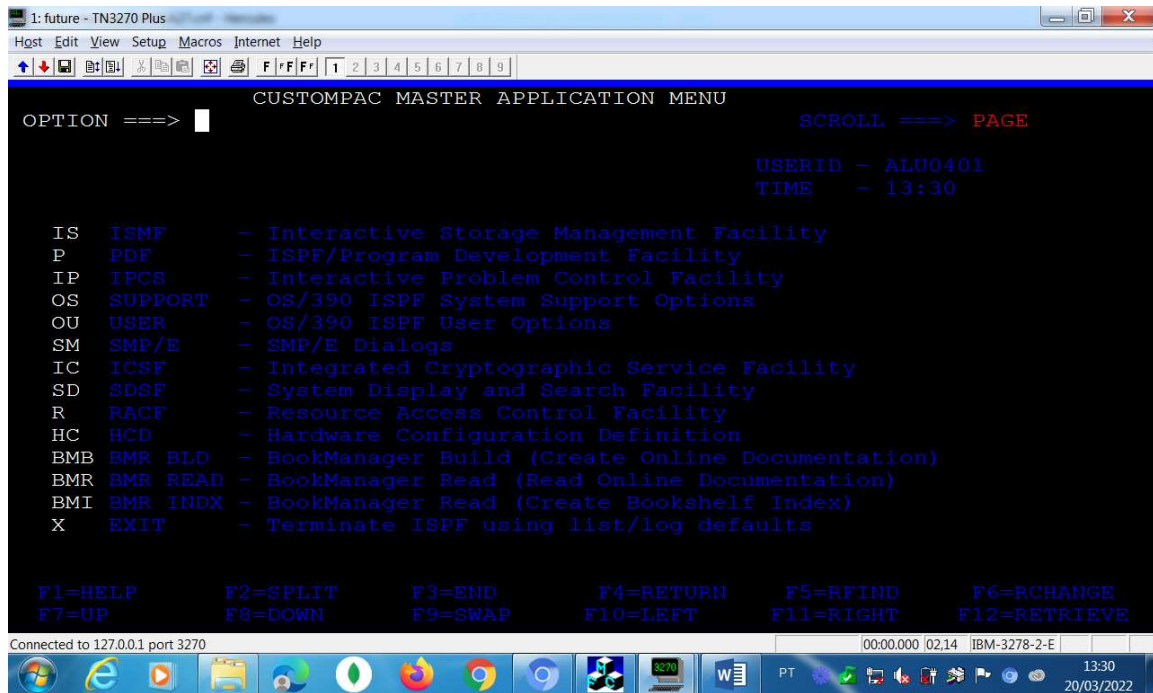


```
1: future - TN3270 Plus
Host Edit View Setup Macros Internet Help
----- TSO/E LOGON -----

ICH70001I ALU0401  LAST ACCESS AT 12:38:36 ON SUNDAY, MARCH 20, 2022
IKJ56455I ALU0401  LOGON IN PROGRESS AT 13:29:47 ON MARCH 20, 2022
IKJ56951I NO BROADCAST MESSAGES

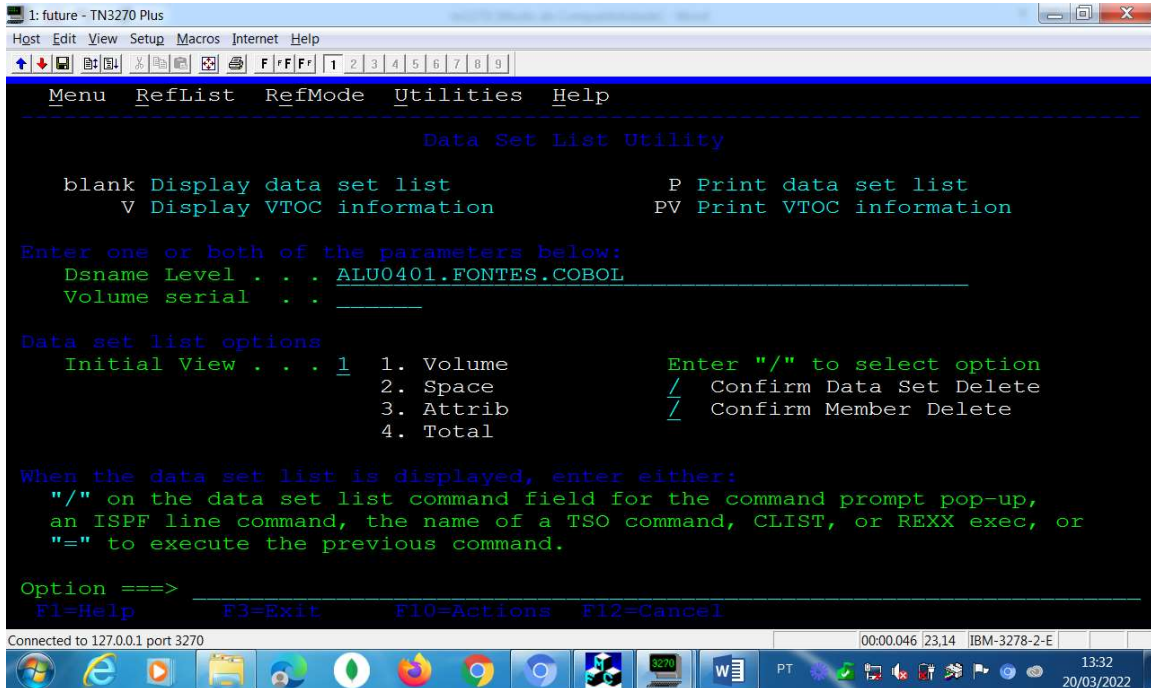
Connected to 127.0.0.1 port 3270
X Enter 00:04.025 04.01 IBM-3278-2-E 13:29 20/03/2022
```

Pronto vc esta no mainframe:



```
1: future - TN3270 Plus
Host Edit View Setup Macros Internet Help
CUSTOMPAC MASTER APPLICATION MENU
OPTION ==>> SCROLL ==>> PAGE
USERID - ALU0401
TIME - 13:30
IS ISMF - Interactive Storage Management Facility
P PDF - ISPF/Program Development Facility
IP IPCS - Interactive Problem Control Facility
OS SUPPORT - OS/390 ISPF System Support Options
OU USER - OS/390 ISPF User Options
SM SMP/E - SMP/E Dialogs
IC ICSF - Integrated Cryptographic Service Facility
SD SDSF - System Display and Search Facility
R RACF - Resource Access Control Facility
HC HCD - Hardware Configuration Definition
BMB BMR BLD - BookManager Build (Create Online Documentation)
BMR BMR READ - BookManager Read (Read Online Documentation)
BMI BMR INDX - BookManager Read (Create Bookshelf Index)
X EXIT - Terminate ISPF using list/log defaults
F1=HELP F2=SPLIT F3=END F4=RETURN F5=RFIND F6=RCHANGE
F7=UP F8=DOWN F9=SWAP F10=LEFT F11=RIGHT F12=RETRIEVE
Connected to 127.0.0.1 port 3270 00:00.000 02:14 IBM-3278-2-E 13:30
20/03/2022
```

Digite P.3.4 e tecla <Enter> para ir para o seu particionad, onde tera uma programa COBOL e um JCL de compilação.



```
1: future - TN3270 Plus
Host Edit View Setup Macros Internet Help
Data Set List Utility

blank Display data set list          P Print data set list
  V Display VTOC information          PV Print VTOC information

Enter one or both of the parameters below:
Dsname Level . . . ALU0401.FONTES.COBOL
Volume serial . . .

Data set list options
Initial View . . . 1
1. Volume          Enter "/" to select option
2. Space          / Confirm Data Set Delete
3. Attrib         / Confirm Member Delete
4. Total

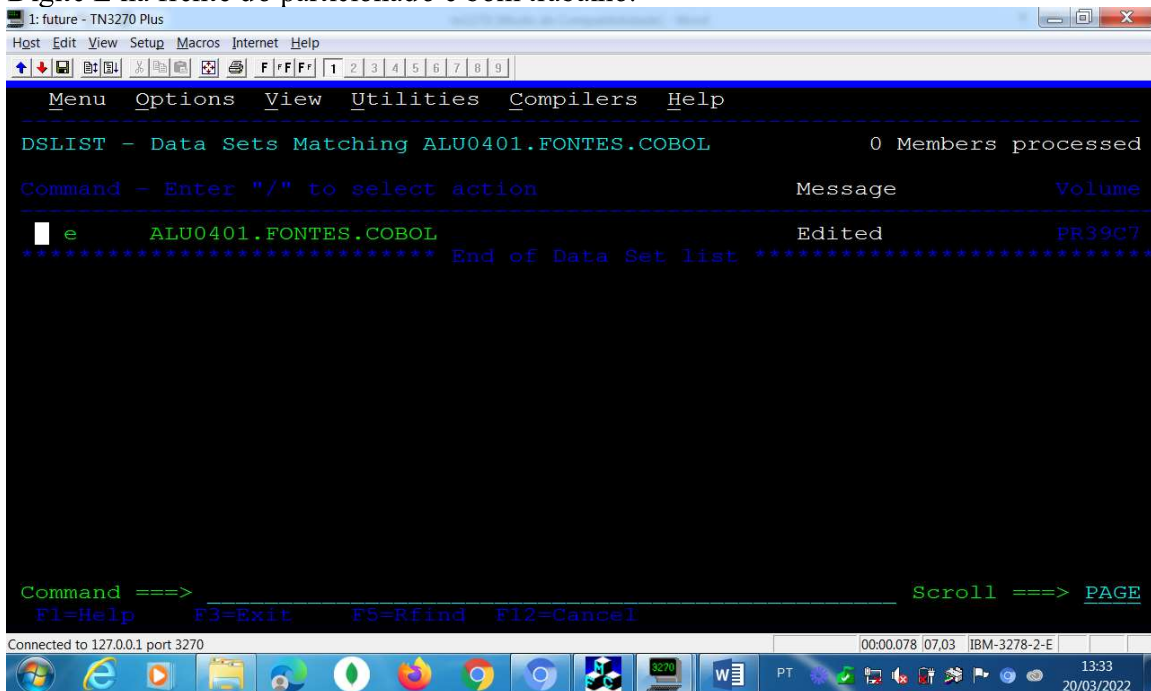
When the data set list is displayed, enter either:
"/" on the data set list command field for the command prompt pop-up,
an ISPF line command, the name of a TSO command, CLIST, or REXX exec, or
"=" to execute the previous command.

Option ==>
F1=Help          F3=Exit          F10=Actions  F12=Cancel

Connected to 127.0.0.1 port 3270          00:00.046 23.14 IBM-3278-2-E          13:32
20/03/2022
```

Tecla <enter>

Digite E na frente do particionado e bom trabalho.



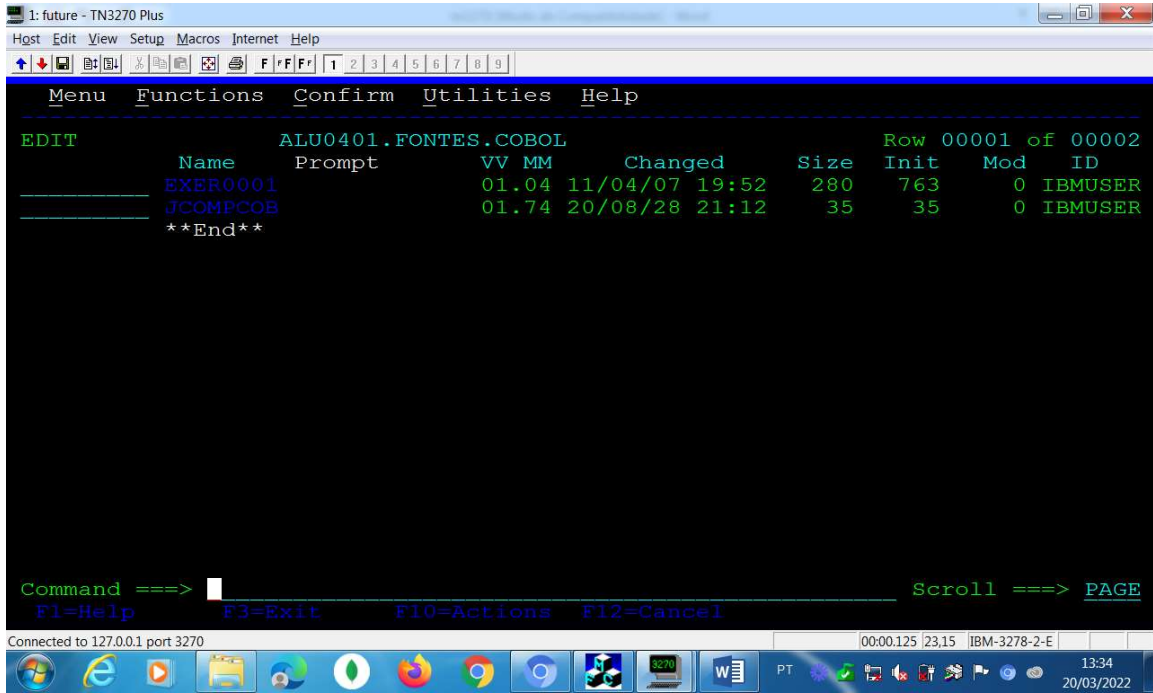
```
1: future - TN3270 Plus
Host Edit View Setup Macros Internet Help
Menu Options View Utilities Compilers Help

DSLISL - Data Sets Matching ALU0401.FONTES.COBOL          0 Members processed

Command - Enter "/" to select action          Message          Volume
e ALU0401.FONTES.COBOL          Edited          PR39C7
***** End of Data Set list *****

Command ==>          Scroll ==> PAGE
F1=Help          F3=Exit          F5=Rfind  F12=Cancel

Connected to 127.0.0.1 port 3270          00:00.078 07.03 IBM-3278-2-E          13:33
20/03/2022
```



The screenshot shows a terminal window titled "1: future - TN3270 Plus". The window contains a menu bar with "Menu", "Functions", "Confirm", "Utilities", and "Help". Below the menu is a table of program listings. The table has columns for Name, Prompt, VV MM, Changed, Size, Init, Mod, and ID. The data rows are:

Name	Prompt	VV	MM	Changed	Size	Init	Mod	ID
EXER0001		01.04		11/04/07 19:52	280	763	0	IBMUSER
JCOMPCOB		01.74		20/08/28 21:12	35	35	0	IBMUSER

Below the table, the text "\*\*End\*\*" is displayed. At the bottom of the terminal, there is a command prompt "Command ===>" and a scroll indicator "Scroll ===> PAGE". The terminal also shows function key definitions: "F1=Help", "F3=Exit", "F10=Actions", and "F12=Cancel". The status bar at the bottom of the window displays "Connected to 127.0.0.1 port 3270", "00:00.125 | 23.15", "IBM-3278-2-E", and the system time "13:34 20/03/2022".