



3º AULA

Introdução ao TSO

Comandos Diversos

Índice

1	Scrool	5
2	File Transfer_.....	7
3	Start.....	10
4	Swap list.....	11
5	Compilação.....	14

PAGINAÇÃO

SCROOL → Tem duas formas de paginar, CSR ou PAGE, CSR ao avançar ou retornar colocará a linha corrente na primeira, já o PAGE avançará sem levar em consideração a posição do cursor .

Editaremos na biblioteca ALUNONA.FONTES.COBOL o membro EXER0001 e faremos o SCROLL com a opção CSR conforme abaixo:

```

File Edit Confirm Menu Utilities Compilers Test Help
-----
EDIT      ALUNONA.FONTES.COBOL(EXER0001) - 01.07          Columns 00001 00072
*****  ***** Top of Data ***** 000100
IDENTIFICATION DIVISION.
000200      PROGRAM-ID.          EXER0001.
000300      AUTHOR.             FUTURE SCHOOL CURSOS DE COMPUTACAO.
000400      *
000500      * GERAR ARQUIVO DE PECAS SELECIONADAS
000600      *                                000700
ENVIRONMENT DIVISION.
000800      CONFIGURATION SECTION.
000900      SPECIAL-NAMES.
001000      DECIMAL-POINT IS COMMA.
001100      *                                001200
INPUT-OUTPUT SECTION.
001300      FILE-CONTROL.
001400      | SELECT CADPECA          ASSIGN TO UT-S-CADPECA          001500
FILE STATUS IS FS-CADPECA.
001600      *
001700      SELECT CADATU          ASSIGN TO UT-S-CADATU          001800
FILE STATUS IS FS-CADATU.
Command ==>
F3=Exit      F5=Rfind      F6=Rchange  F12=Cancel          Scroll ==> CSR      F1=Help

```

Scroll na opção CSR.

Com o cursor na linha 001400 e tecla PF8 .

Podemos observar que a linha 001400 foi movimentada para cabeçalho da página.

```

File Edit Confirm Menu Utilities Compilers Test Help
-----
EDIT      ALUNONA.FONTES.COBOL(EXER0001) - 01.07          Columns 00001 00072
001400      SELECT CADPECA          ASSIGN TO UT-S-CADPECA          001500
FILE STATUS IS FS-CADPECA.
001600      *
001700      SELECT CADATU          ASSIGN TO UT-S-CADATU          001800
FILE STATUS IS FS-CADATU.
001900      *                                002000
DATA      DIVISION.
002100      FILE          SECTION.
002200      *
002300      FD CADPECA
002400      RECORD CONTAINS 80 CHARACTERS
002500      RECORDING MODE IS F
002600      LABEL RECORD IS STANDARD          002700
DATA RECORD IS REG-CADPECA.
002800      01 REG-CADPECA.
002900      05 COD-PECA          PIC 9(05).
003000      05 NOME-PECA          PIC X(30).
003100      05 QTD-PECA          PIC 9(05).
003200      05 QTD-MINIMA          PIC 9(05).
Command ==>
F1=Help      F3=Exit      F5=Rfind      F6=Rchange  F12=Cancel          Scroll ==> CSR

```

Com o cursor na linha 002900 e tecla PF7 .

Podemos observar abaixo que a linha 002900 foi movimentada para rodapé da página.

```

File Edit Confirm Menu Utilities Compilers Test Help
-----
EDIT ALUNONA.FONTES.COBOL(EXER0001) - 01.07 Columns 00001 00072
001100 * 001200
INPUT-OUTPUT SECTION.
001300 FILE-CONTROL.
001400 SELECT CADPECA ASSIGN TO UT-S-CADPECA 001500
FILE STATUS IS FS-CADPECA.
001600 *
001700 SELECT CADATU ASSIGN TO UT-S-CADATU 001800
FILE STATUS IS FS-CADATU.
001900 * 002000
DATA DIVISION.
002100 FILE SECTION.
002200 *
002300 FD CADPECA
002400 RECORD CONTAINS 80 CHARACTERS
002500 RECORDING MODE IS F
002600 LABEL RECORD IS STANDARD 002700
DATA RECORD IS REG-CADPECA.
002800 01 REG-CADPECA.
002900 05 COD-PECA PIC 9(05).
Command ==> Scroll ==> CSR F1=Help
F3=Exit F5=Rfind F6=Rchange F12=Cancel

```

Com o cursor na linha de comando teclando PF8 posso avançar pagina á pagina até o fim do programa.

```

File Edit Confirm Menu Utilities Compilers Test Help
-----
EDIT ALUNONA.FONTES.COBOL(EXER0001) - 01.07 Columns 00001 00072
026400 *===== 026500
900-00-ERRO SECTION.
026600 *=====
026700
026800 DISPLAY '***** EXER0001 *****'
026900 DISPLAY '*'
027000 DISPLAY '* ERRO ' FS-OPERACAO ' DO ARQUIVO ' FS-ARQUIVO ' *'
027100 DISPLAY '*'
027200 DISPLAY '* FILE STATUS = ' FS-COD-STATUS
027300 ' *'
027400 DISPLAY '*'
027500 DISPLAY '* PROGRAMA ENCERRADO'
027600 ' *'
027700 DISPLAY '*'
027800 DISPLAY '***** EXER0001 *****' 027900
STOP RUN.
028000 028100
900-00-FIM. EXIT.
***** ***** Bottom of Data *****
Command ==> | Scroll ==> CSR
F1=Help F3=Exit F5=Rfind F6=Rchange F12=Cancel

```

Com o cursor na linha de comando teclando PF7 podemos retornar pagina á pagina até o inicio do programa.

```

File Edit Confirm Menu Utilities Compilers Test Help
-----
EDIT          ALUNONA.FONTES.COBOL(EXER0001) - 01.07          Columns 00001 00072
***** ***** Top of Data ***** 000100
IDENTIFICATION DIVISION.
000200        PROGRAM-ID.          EXER0001.
000300        AUTHOR.             FUTURE SCHOOL CURSOS DE COMPUTACAO.
000400        *
000500        * GERAR ARQUIVO DE PECAS SELECIONADAS
000600        *                               000700
ENVIRONMENT   DIVISION.
000800        CONFIGURATION SECTION.
000900        SPECIAL-NAMES.
001000        DECIMAL-POINT IS COMMA.
001100        *                               001200
INPUT-OUTPUT SECTION.
001300        FILE-CONTROL.
001400        SELECT CADPECA          ASSIGN TO UT-S-CADPECA          001500
FILE STATUS  IS FS-CADPECA.
001600        *
001700        SELECT CADATU          ASSIGN TO UT-S-CADATU          001800
FILE STATUS  IS FS-CADATU.          Command ==> |
Scroll ==> CSR      F1=Help          F3=Exit          F5=Rfind          F6=Rchange  F12=Cancel

```

Scroll na opção PAGE.

Altere a opção Scroll para PAGE, conforme abaixo:

```

File Edit Confirm Menu Utilities Compilers Test Help
-----
EDIT          ALUNONA.FONTES.COBOL(EXER0001) - 01.07          Columns 00001 00072
***** ***** Top of Data ***** 000100
IDENTIFICATION DIVISION.
000200        PROGRAM-ID.          EXER0001.
000300        AUTHOR.             FUTURE SCHOOL CURSOS DE COMPUTACAO.
000400        *
000500        * GERAR ARQUIVO DE PECAS SELECIONADAS
000600        *                               000700
ENVIRONMENT   DIVISION.
000800        CONFIGURATION SECTION.
000900        SPECIAL-NAMES.
001000        DECIMAL-POINT IS COMMA.
001100        *                               001200
INPUT-OUTPUT SECTION.
001300        FILE-CONTROL.
001400        SELECT CADPECA          ASSIGN TO UT-S-CADPECA          001500
FILE STATUS  IS FS-CADPECA.
001600        *
001700        SELECT CADATU          ASSIGN TO UT-S-CADATU          001800
FILE STATUS  IS FS-CADATU.          Command ==>
Scroll ==> PAGE
      F1=Help          F3=Exit          F5=Rfind          F6=Rchange  F12=Cancel

```

Independente a linha que estiver o cursor, teclando PF8 você poderá visualizar pagina á pagina até o fim do programa.

```

File Edit Confirm Menu Utilities Compilers Test Help
-----
EDIT          ALUNONA.FONTES.COBOL(EXER0001) - 01.07          Columns 00001 00072
026400      *=====* 026500
900-00-ERRO          SECTION.
026600      *=====*
026700
026800          DISPLAY '***** EXER0001 *****'
026900          DISPLAY '*'
027000          DISPLAY '* ERRO ' FS-OPERACAO ' DO ARQUIVO ' FS-ARQUIVO ' *'
027100          DISPLAY '*'
027200          DISPLAY '* FILE STATUS = ' FS-COD-STATUS
027300          '
027400          DISPLAY '*'
027500          DISPLAY '* PROGRAMA ENCERRADO'
027600          '
027700          DISPLAY '*'
027800          DISPLAY '***** EXER0001 *****' 027900
STOP RUN.
028000 028100
900-00-FIM.          EXIT.
***** ***** Bottom of Data *****
Command ==>          Scroll ==> PAGE
F1=Help          F3=Exit          F5=Rfind          F6=Rchange          F12=Cancel

```

Independente a linha que estiver o cursor, teclando PF7 visualizaremos pagina á pagina até o inicio do programa.

```

File Edit Confirm Menu Utilities Compilers Test Help
-----
EDIT          ALUNONA.FONTES.COBOL(EXER0001) - 01.07          Columns 00001 00072
***** ***** Top of Data ***** 000100
IDENTIFICATION DIVISION.
000200          PROGRAM-ID.          EXER0001.
000300          AUTHOR.          FUTURE SCHOOL CURSOS DE COMPUTACAO.
000400          *
000500          * GERAR ARQUIVO DE PECAS SELECIONADAS
000600          * 000700
ENVIRONMENT          DIVISION.
000800          CONFIGURATION SECTION.
000900          SPECIAL-NAMES.
001000          DECIMAL-POINT IS COMMA.
001100          * 001200
INPUT-OUTPUT          SECTION.
001300          FILE-CONTROL.
001400          SELECT CADPECA          ASSIGN TO UT-S-CADPECA 001500
FILE STATUS          IS FS-CADPECA.
001600          *
001700          SELECT CADATU          ASSIGN TO UT-S-CADATU 001800
FILE STATUS          IS FS-CADATU.
Command ==>          Scroll ==> PAGE
F1=Help          F3=Exit          F5=Rfind          F6=Rchange          F12=Cancel

```

FILE TRANSFER – TRANSFERÊNCIAS DE ARQUIVOS

Podemos transferir arquivos do Mainframe para outras tecnologias ou também de outras tecnologias para o Mainframe, veremos abaixo como fazer:

Digite **P** em OPTION e tecla <ENTER>.

```
OPTION ==> P CUSTOMPAC MASTER APPLICATION MENU          SCROLL ==> PAGE
USERID - ALUNOJ2
TIME   - 01:35
```

```
IS ISMF - Interactive Storage Management Facility
P PDF   - ISPF/Program Development Facility
IP IPCS - Interactive Problem Control Facility
OS SUPPORT - OS/390 ISPF System Support Options
OU USER - OS/390 ISPF User Options
SM SMP/E - SMP/E Dialogs
IC ICSF - Integrated Cryptographic Service Facility
SD SDSF - System Display and Search Facility
R RACF  - Resource Access Control Facility
HC HCD  - Hardware Configuration Definition
BMB BMR BLD - BookManager Build (Create Online Documentation)
BMR BMR READ - BookManager Read (Read Online Documentation)
BMI BMR INDX - BookManager Read (Create Bookshelf Index)
X EXIT  - Terminate ISPF using list/log defaults
```

```
F1=HELP      F2=SPLIT    F3=END      F4=RETURN   F5=RFIND    F6=RCHANGE
F7=UP        F8=DOWN      F9=SWAP    F10=LEFT   F11=RIGHT   F12=RETRIEVE
```

Digite **6** em OPTION e tecla <ENTER>.

```
Menu Utilities Compilers Options Status Help
-----
ISPF Primary Option Menu          Invalid option

0 Settings      Terminal and user parameters      No. of keys: 12
1 View          Display source data or listings   Keys / line: SIX
2 Edit          Create or change source data      Primary set: SIX
3 Utilities     Perform utility functions         Display set: PRI
4 Foreground   Interactive language processing   List name. : ISRSAB
5 Batch         Submit job for language processing List applid: ISR
6 Command      Enter TSO or Workstation commands List type. : SHARED
7 Dialog Test  Perform dialog testing            Keylists . : PRIVATE
8 LM Facility  Library administrator functions
9 IBM Products IBM program development products
10 SCLM        SW Configuration Library Manager
11 Workplace   ISPF Object/Action Workplace

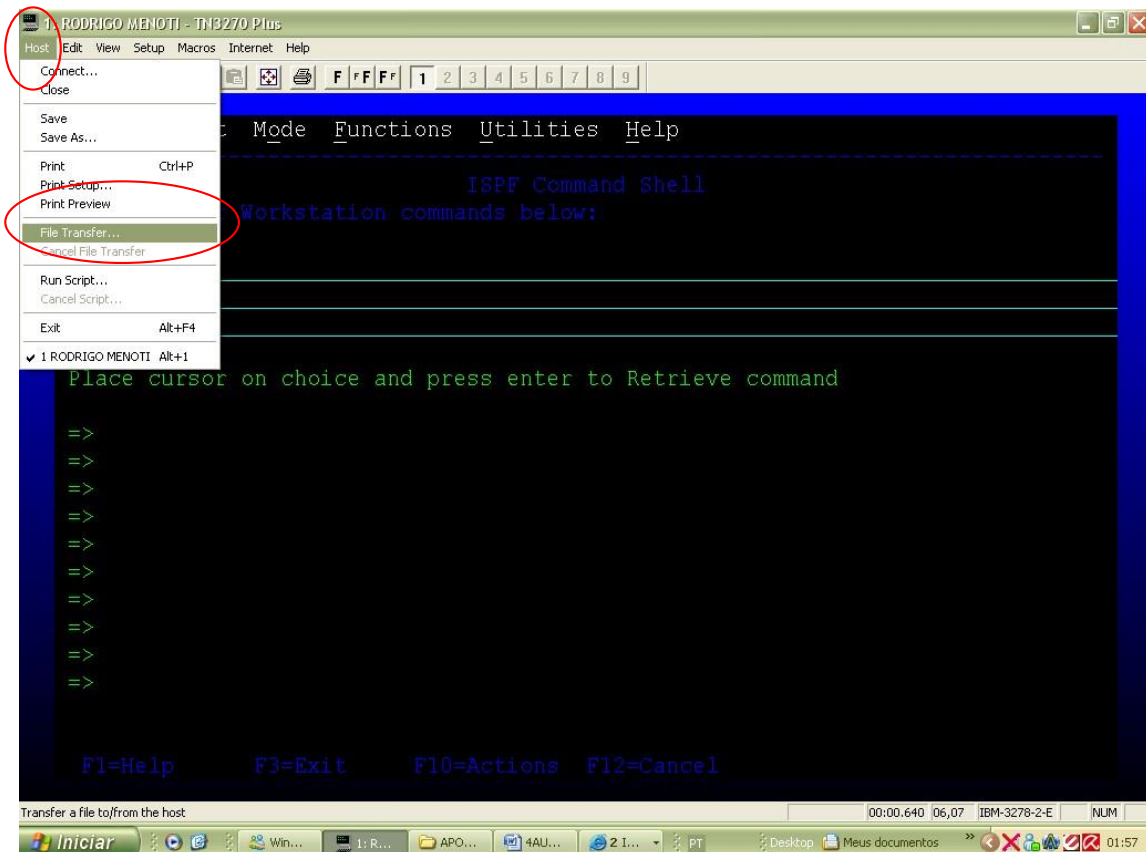
Enter X to Terminate using log/list defaults
```

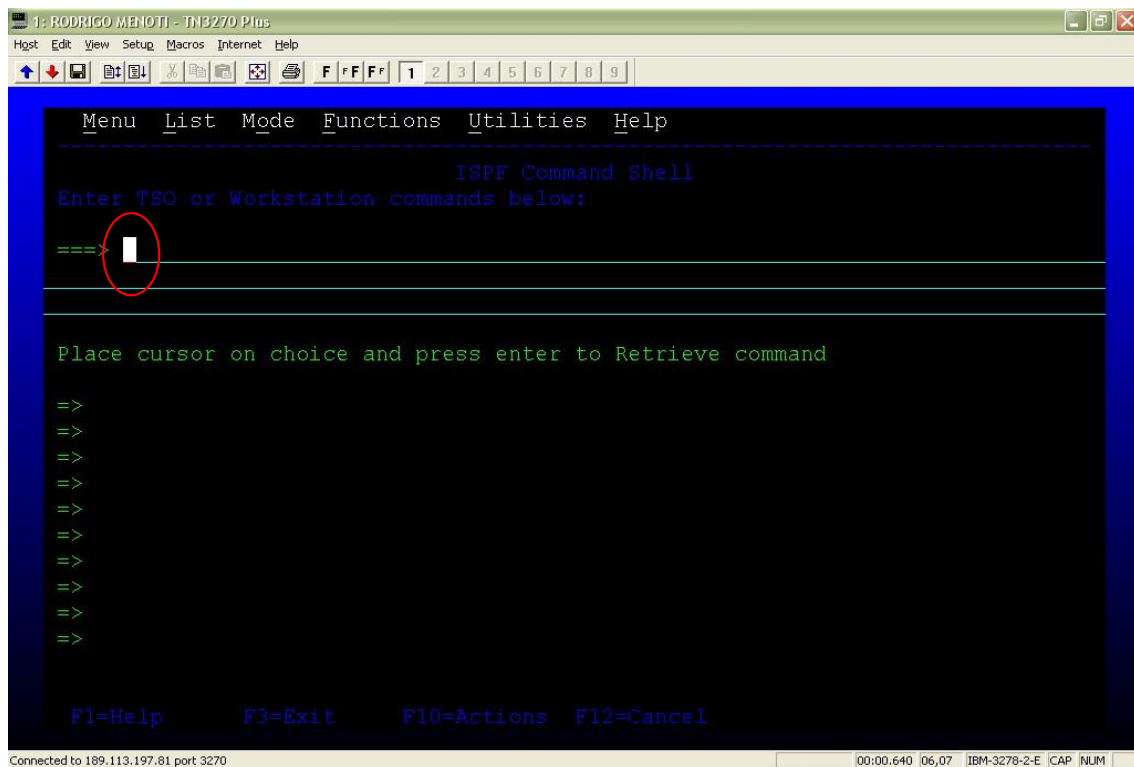
```
Option ==> 6
F3=Exit    F10=Actions  F12=Cancel
```

F1=Help

Lembre-se o cursor deve estar na 1º posição da linha.

Com o mouse clique em Host, e após na opção File Transfer





Vejamos como preencher as informações necessárias.

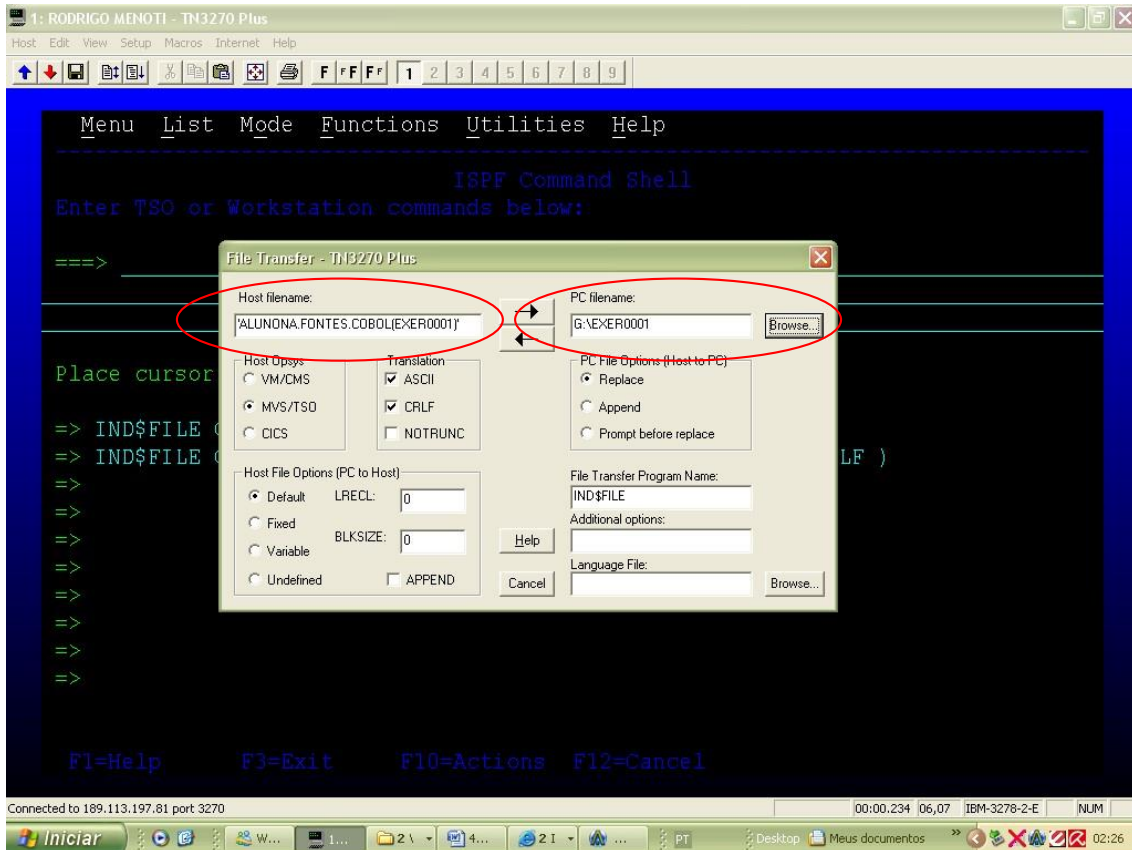
Host Filename → abrir aspas simples, digitar a biblioteca para onde quero copiar ou inserir um membro e entre parenteses ponho nome desse membro exemplo:

'ALUNONA.FONTES.COBOL(EXER0001)'

Pc Filename → clique no botão Browse e procure o diretório onde vai copiar o membro no exemplo da tela copiarei para o Pendrive G:\ mais o nome do membro.

Se quisermos transferir do (Mainframe) da biblioteca do aluno para o pendrive devo clicar no botão seta de cima →

Se quisermos transferir do pendrive para o (Mainframe) para biblioteca do aluno devo clicar no botão seta de baixo ←



START

Comando usado para abrir janelas de trabalho.

Digite na linha de comando **START** tecele <ENTER>.

```

File Edit Confirm Menu Utilities Compilers Test Help
-----
EDIT      ALUNONA.FONTES.COBOL(EXER0001) - 01.07          Columns 00001 00072
*****  ***** Top of Data ***** 000100
IDENTIFICATION DIVISION.
000200      PROGRAM-ID.          EXER0001.
000300      AUTHOR.             FUTURE SCHOOL CURSOS DE COMPUTACAO.
000400      *
000500      * GERAR ARQUIVO DE PECAS SELECIONADAS

```

```

000600      *
ENVIRONMENT      DIVISION.
000800      CONFIGURATION SECTION.
000900      SPECIAL-NAMES.
001000      DECIMAL-POINT IS COMMA.
001100      *
INPUT-OUTPUT SECTION.
001300      FILE-CONTROL.
001400      SELECT CADPECA      ASSIGN TO UT-S-CADPECA
001500
FILE STATUS      IS FS-CADPECA.
001600      *
001700      SELECT CADATU      ASSIGN TO UT-S-CADATU
Command ==> START      Scroll ==> PAGE
F1=Help      F3=Exit      F5=Rfind      F6=Rchange      F12=Cancel

```

Podemos observar que mais uma janela foi aberta.

```

                                CUSTOMPAC MASTER APPLICATION MENU
OPTION ==>                                SCROLL ==> PAGE

                                USERID - ALUNOJ2
                                TIME   - 22:04

IS ISMF      - Interactive Storage Management Facility
P  PDF       - ISPF/Program Development Facility
IP IPCS      - Interactive Problem Control Facility
OS SUPPORT   - OS/390 ISPF System Support Options
OU USER     - OS/390 ISPF User Options
SM SMP/E     - SMP/E Dialogs
IC ICSF     - Integrated Cryptographic Service Facility
SD SDSF     - System Display and Search Facility
R  RACF     - Resource Access Control Facility
HC HCD      - Hardware Configuration Definition
BMB BMR BLD - BookManager Build (Create Online Documentation)
BMR BMR READ - BookManager Read (Read Online Documentation)
BMI BMR INDX - BookManager Read (Create Bookshelf Index)
X  EXIT     - Terminate ISPF using list/log defaults

F1=HELP      F2=SPLIT      F3=END      F4=RETURN      F5=RFIND      F6=RCHANGE
F7=UP        F8=DOWN      F9=SWAP     F10=LEFT      F11=RIGHT     F12=RETRIEVE

```

PF9 Para Alternar entre as duas janelas Tecle PF9 e navegue, variando entre as telas.

SWAP LIST

Podem ser abertas até 8 janelas no TSO. Quando abrir mais de duas janelas para visualizá-las use o comando **SWAP LIST** . Digite **START** na linha de comando <ENTER>.

```

Menu Functions Confirm Utilities Help
-----
EDIT      ALUNONA.FONTES.COBOL      Row 00001 of 00004
          Name Prompt      VV MM      Changed      Size Init Mod ID
          EXER0001 *Edited      01.07 10/08/22 21:35      281 198 281 ALUNOJ2

```

```

_____ TESTE222          01.00 10/08/17 16:37    5    5    0 ALUNOJ2
_____ TESTE555          01.00 10/08/17 16:37    5    5    0 ALUNOJ2
_____ TESTE777          01.00 10/08/17 16:37    5    5    0 ALUNOJ2
_____ **End**

```

```

Command ==> START                               Scroll ==> PAGE
F1=Help      F3=Exit      F10=Actions  F12=Cancel

```

O comando start abrirá uma 2ª tela.

Digite OPTION P.3.2 <ENTER>

```

_____ CUSTOMPAC MASTER APPLICATION MENU
OPTION ==> P.3.2                               SCROLL ==> PAGE

USERID - ALUNOJ2
TIME   - 22:25

IS ISMF - Interactive Storage Management Facility
P PDF   - ISPF/Program Development Facility
IP IPCS - Interactive Problem Control Facility
OS SUPPORT - OS/390 ISPF System Support Options
OU USER - OS/390 ISPF User Options
SM SMP/E - SMP/E Dialogs
IC ICSF - Integrated Cryptographic Service Facility
SD SDSF - System Display and Search Facility
R RACF  - Resource Access Control Facility
HC HCD  - Hardware Configuration Definition
BMB BMR BLD - BookManager Build (Create Online Documentation)
BMR BMR READ - BookManager Read (Read Online Documentation)
BMI BMR INDX - BookManager Read (Create Bookshelf Index)
X EXIT  - Terminate ISPF using list/log defaults

F1=HELP      F2=SPLIT      F3=END      F4=RETURN      F5=RFIND      F6=RCHANGE      F7=UP
F8=DOWN     F9=SWAP       F10=LEFT   F11=RIGHT     F12=RETRIEVE

```

Digite **START** na linha de comando <ENTER>.

```

Menu RefList Utilities Help
-----
Data Set Utility

A Allocate new data set          C Catalog data set

```


OPTION ==>> SWAP LIST

SCROLL ==>> PAGE

USERID - ALUNOJ2
TIME - 17:51

```
IS ISMF      - Interactive Storage Management Facility
P  PDF       - ISPF/Program Development Facility
IP IPCS      - Interactive Problem Control Facility
OS SUPPORT   - OS/390 ISPF System Support Options
OU USER     - OS/390 ISPF User Options
SM SMP/E     - SMP/E Dialogs
IC ICSF      - Integrated Cryptographic Service Facility
SD SDSF      - System Display and Search Facility
R  RACF      - Resource Access Control Facility
HC HCD       - Hardware Configuration Definition
BMB BMR BLD  - BookManager Build (Create Online Documentation)
BMR BMR READ - BookManager Read (Read Online Documentation)
BMI BMR INDX - BookManager Read (Create Bookshelf Index)
X  EXIT      - Terminate ISPF using list/log defaults
```

F1=HELP F2=SPLIT F3=END F4=RETURN F5=RFIND F6=RCHANGE F7=UP
F8=DOWN F9=SWAP F10=LEFT F11=RIGHT F12=RETRIEVE

Nesta tela abaixo teremos :

1. Última tela aberta terá somente o ID.
2. Penúltima tela aberta terá o ID mais um -.
3. Primeira tela aberta terá o ID mais um *.

Para abrir umas das telas posicione o cursor ao lado esquerdo da escolhida e tecle <ENTER>.

```

                                CUSTOMPAC MASTER APPLICATION MENU
O .----- ISPF Task List ----- SCROLL ==>> PAGE
|   Active ISPF Logical Sessions   |
|   ID Name      Panelid  Applid  |   USERID - ALUNOJ2
|   |. 1  DSLIST  ISPSTRTP PDF    |   TIME - 17:51
|   |. 2- EDIT   ISPSTRTP PDF    |   ment Facility
|   |. 3*        ISP@MSTR  ISP    |   acility
|   |.          |               |   l Facility
|   |.          |               |   Options
|   |.          |               |
|   |.          |               |   ervice Facility
|   |.          |               |   Facility
|   |.          |               |   cility
|   |.          |               |   inition
|   F1=Help     F3=Exit     F12=Cancel |   Online Documentation)
|-----|-----|-----|-----|
BMR BMR READ - BookManager Read (Read Online Documentation)
BMI BMR INDX - BookManager Read (Create Bookshelf Index)
X  EXIT      - Terminate ISPF using list/log defaults

F1=HELP      F2=SPLIT      F3=END      F4=RETURN      F5=RFIND      F6=RCHANGE
```

Compilação.

Digite o programa, lembrando que para isso existem regras da linguagem COBOL. [Informações no site sobre nossas apostila didática\(COBOL\).](#)

```
IDENTIFICATION DIVISION.
PROGRAM-ID.     EXER0001.
AUTHOR.        FUTURE SCHOOL CURSOS DE COMPUTACAO.
*
* GERAR ARQUIVO DE PECAS SELECIONADAS
*
ENVIRONMENT DIVISION.
CONFIGURATION SECTION.
SPECIAL-NAMES.
DECIMAL-POINT IS COMMA.
*
INPUT-OUTPUT SECTION.
FILE-CONTROL.
    SELECT CADPECA      ASSIGN TO UT-S-CADPECA
    FILE STATUS        IS FS-CADPECA.
*
    SELECT CADATU      ASSIGN TO UT-S-CADATU
    FILE STATUS        IS FS-CADATU.
*
DATA DIVISION.
FILE SECTION.
*
FD CADPECA
RECORD CONTAINS 80 CHARACTERS
RECORDING MODE IS F LABEL
RECORD IS STANDARD DATA RECORD
IS REG-CADPECA.
    01 REG-CADPECA.
        05 COD-PECA          PIC 9(05).
        05 NOME-PECA         PIC X(30).
        05 QTD-PECA          PIC 9(05).
        05 QTD-MINIMA        PIC 9(05).
        05 QTD-MAXIMA        PIC 9(05).
        05 FORNECEDOR        PIC X(05).
        05 PR-UNITARIO       PIC 9(07)V99.
        05 PERDA             PIC 9(07)V99.
        05 TIPO              PIC X(01).
        05 FILLER            PIC X(06).
*
FD CADATU
RECORD CONTAINS 80 CHARACTERS
RECORDING MODE IS F LABEL
RECORD IS REG-CADATU.
    01 REG-CADATU.
        05 COD-ATU          PIC 9(05).
        05 NOME-ATU         PIC X(30).
        05 QTD-ATU          PIC 9(05).
        05 QTD-MIN-ATU      PIC 9(05).
        05 QTD-MAX-ATU      PIC 9(05).
        05 FORN-ATU         PIC X(05).
        05 PR-UNIT-ATU      PIC 9(07)V99.
        05 PERDA-ATU        PIC 9(07)V99.
        05 TIPO-ATU         PIC X(01).
        05 FILLER           PIC X(06).
*
WORKING-STORAGE SECTION.
*
AREAS EDITADAS
*
    01 WS-LIDOS-ED          PIC ZZZ.ZZZ.ZZZ.ZZ9.
    01 WS-GRAVADOS-ED      PIC ZZZ.ZZZ.ZZZ.ZZ9.
```

```

*
* ACUMULADORES
*
      77 ACUM-LIDOS                PIC 9(12) VALUE 0.
      77 ACUM-GRAVADOS            PIC 9(12) VALUE 0.
*
* FILE STATUS
*
      77 FS-CADPECA                PIC X(02) VALUE SPACES.
      77 FS-CADATU                 PIC X(02) VALUE SPACES.
      77 FS-COD-STATUS             PIC X(02) VALUE SPACES.
      77 FS-ARQUIVO                PIC X(08) VALUE SPACES.
      77 FS-OPERACAO              PIC X(13) VALUE SPACES.
      77 FS-ABERTURA              PIC X(13) VALUE 'NA ABERTURA'.      77 FS-
LEITURA                          PIC X(13) VALUE 'NA LEITURA'.      77 FS-
PIC X(13) VALUE 'NA GRAVACAO'.
      77 FS-FECHAMENTO             PIC X(13) VALUE 'NO FECHAMENTO'.
*
      PROCEDURE          DIVISION.

*=====*
      000-00-INICIO                SECTION.
*=====*

      PERFORM          001-00-ABRIR-ARQUIVOS.

      PERFORM          002-00-VER-ARQ-VAZIO.

      PERFORM          003-00-TRATAR-CADPECA      UNTIL
FS-CADPECA EQUAL '10'.

      PERFORM          004-00-FECHAR-ARQUIVOS.

      STOP              RUN.

*=====*
      001-00-ABRIR-ARQUIVOS        SECTION.
*=====*

      MOVE          FS-ABERTURA          TO          FS-OPERACAO.

      OPEN          INPUT          CADPECA
OUTPUT CADATU.

      PERFORM          001-01-TESTAR-FS.

      001-00-FIM.          EXIT.

*=====*
      001-01-TESTAR-FS            SECTION.
*=====*

      PERFORM          001-02-FS-CADPECA.

      PERFORM          001-03-FS-CADATU.

      001-01-FIM.          EXIT.

*=====*
      001-02-FS-CADPECA          SECTION.
*=====*

      MOVE          'CADPECA'          TO          FS-ARQUIVO.

      MOVE          FS-CADPECA          TO          FS-COD-STATUS.

      IF          FS-CADPECA          NOT EQUAL          '00' AND '10'
PERFORM 900-00-ERRO          END-IF.

```



```

001-02-FIM.                                EXIT.

*=====*
001-03-FS-CADATU                            SECTION.
*=====*
'CADATU'                                     TO      FS-ARQUIVO.                                MOVE

      MOVE   FS-CADATU                        TO      FS-COD-STATUS.

      IF   FS-CADATU      NOT EQUAL  '00' AND '10'
PERFORM 900-00-ERRO      END-IF.

001-03-FIM.                                EXIT.

*=====*
002-00-VER-ARQ-VAZIO                        SECTION.
*=====*

      PERFORM 002-01-LER-CADPECA.
      IF   FS-CADPECA      EQUAL  '10'
        DISPLAY '***** EXER0001 *****'
        DISPLAY '*
        DISPLAY '*          ARQUIVO CADPECA VAZIO          *
        DISPLAY '*
        DISPLAY '*          PROGRAMA CANCELADO              *
        DISPLAY '*
        DISPLAY '****** EXER0001 *****'
      PERFORM 004-00-FECHAR-ARQUIVOS
STOP    RUN      END-IF.

002-00-FIM.                                EXIT.

*=====*
002-01-LER-CADPECA                            SECTION.
*=====*

      MOVE   FS-LEITURA                        TO      FS-OPERACAO.

      READ   CADPECA.

      IF   FS-CADPECA      NOT EQUAL  '10'
        PERFORM 001-02-FS-CADPECA
        ADD   1                                TO      ACUM-LIDOS
      END-IF.

002-01-FIM.                                EXIT.

*=====*
003-00-TRATAR-CADPECA                        SECTION.
*=====*

      PERFORM 003-01-GRAVAR-CADATU.

      PERFORM 002-01-LER-CADPECA.

003-00-FIM.                                EXIT.

*=====*
003-01-GRAVAR-CADATU                            SECTION.
*=====*

      WRITE  REG-CADATU                        FROM  REG-CADPECA

      MOVE   FS-GRAVACAO                        TO      FS-OPERACAO.

      PERFORM 001-03-FS-CADATU.

      ADD   1                                TO      ACUM-GRAVADOS.

```

```

003-01-FIM.          EXIT.

=====
004-00-FECHAR-ARQUIVOS          SECTION.
=====
FS-FECHAMENTO          TO          FS-OPERACAO.          MOVE

CADATU.          CLOSE          CADPECA

PERFORM          001-01-TESTAR-FS.

MOVE          ACUM-LIDOS          TO          WS-LIDOS-ED.

MOVE          ACUM-GRAVADOS          TO          WS-GRAVADOS-ED.

DISPLAY          ' '.

DISPLAY
*****
- *****
  DISPLAY
  ***          ESTATISTICA DE PROCESSAMENTO
- '
  ***
  DISPLAY
  ***-----
- '-----***
  DISPLAY
  ***          PROGRAMA EXER0001
- '
  ***
  DISPLAY
  ***-----
- '-----***
  DISPLAY
  *** DDNAME | FUN | DESCRICAO DO ARQUIVO | QUANTID
- 'ADE ***
  DISPLAY
  ***----- | --- | ----- | -----
- '----- ***
  DISPLAY
  *** CADPECA | L | CADASTRO DE PECAS | '
          WS-LIDOS-ED | ' ***
  DISPLAY
  *** CADATU | G | CADATRO ATUALIZADO | '
          WS-GRAVADOS-ED | ' ***
  DISPLAY
  ***-----
- '-----***
  DISPLAY
  *****
- *****
  DISPLAY ' '.

004-00-FIM.          EXIT.

=====
900-00-ERRO          SECTION.
=====

DISPLAY ***** EXER0001 *****
DISPLAY '*
DISPLAY '* ERRO ' FS-OPERACAO ' DO ARQUIVO ' FS-ARQUIVO ' *
DISPLAY '*
DISPLAY '* FILE STATUS = ' FS-COD-STATUS
          *
DISPLAY '*
DISPLAY '* PROGRAMA ENCERRADO'

```

```

          DISPLAY '*
          DISPLAY '***** EXER0001 *****'
STOP      RUN.

          900-00-FIM.          EXIT.
  
```

Tecla PF3

Copiar da biblioteca da escola FUTURE.FONTES.JCLS (JCOMPCOB). Dúvidas volte na aula3.

Digite E editar compilador que na escola tem nome de JCOMCOB.

```

Menu  Functions  Confirm  Utilities  Help
-----
EDIT      ALUNONA.FONTES.COBOL                      Row 00001 of 00005
          Name      Prompt      VV MM      Changed      Size  Init  Mod  ID
-----
          EXER0001   01.07  10/08/22  21:35      281   198   281  ALUNOJ2
          E JCOMPCOB      01.41  08/03/05  21:40       35    35    0  IBMUSER
          TESTE222   01.00  10/08/17  16:37        5     5    0  ALUNOJ2
          TESTE555   01.00  10/08/17  16:37        5     5    0  ALUNOJ2
          TESTE777   01.00  10/08/17  16:37        5     5    0  ALUNOJ2
          **End**
  
```

Command ==> Scroll ==> PAGE F1=Help
 F3=Exit F10=Actions F12=Cancel

Mude NOTIFY=IBMUSER para seu NOTIFY=ALUNOXX.

Informações no site sobre nossas apostilas didáticas (JCLS).

```

File  Edit  Confirm  Menu  Utilities  Compilers  Test  Help
-----
EDIT      ALUNONA.FONTES.COBOL(JCOMPCOB) - 01.41      Columns 00001 00072
***** ***** Top of Data *****
000001 //JCOMPCOB JOB  IBMUSERB,MSGCLASS=A,CLASS=C,NOTIFY=ALUNONA
000002 //IGYWCLG PROC  SYSLBLK=3200,
000003 //          LIBPRFX='CEE'
000004 //*
000005 //COBOL  EXEC  PGM=IGYCRCTL,REGION=2048K,
000006 //          PARM=(LIST,MAP,APOST,DYNAM)
000007 //SYSPRINT DD  SYSOUT=*
000008 //STEPLIB  DD  DISP=SHR,DSN=IGY.V2R1M0.SIGYCOMP
000009 //SYSLIN  DD  DSNAME=&&LOADSET,UNIT=SYSDA,
000010 //          DISP=(MOD,PASS),SPACE=(TRK,(3,3)),
000011 //          DCB=(BLKSIZE=&SYSLBLK)
000012 //SYSUT1  DD  UNIT=SYSDA,SPACE=(CYL,(1,1))
000013 //SYSUT2  DD  UNIT=SYSDA,SPACE=(CYL,(1,1))
000014 //SYSUT3  DD  UNIT=SYSDA,SPACE=(CYL,(1,1))
000015 //SYSUT4  DD  UNIT=SYSDA,SPACE=(CYL,(1,1))
000016 //SYSUT5  DD  UNIT=SYSDA,SPACE=(CYL,(1,1))
000017 //SYSUT6  DD  UNIT=SYSDA,SPACE=(CYL,(1,1))
000018 //SYSUT7  DD  UNIT=SYSDA,SPACE=(CYL,(1,1))
Command ==> Scroll ==> PAGE
          F1=Help      F3=Exit      F5=Rfind      F6=Rchange      F12=Cancel
  
```

Podemos observar que na linha 000026 entre parênteses digite o membro a ser compilado EXER0001 , na Linha 000035 mude DSN=FUTURE para seu aluno DSN=ALUNOXX e entre parênteses digite o membro a ser compilado EXER0001.

```
File Edit Confirm Menu Utilities Compilers Test Help
-----
EDIT          ALUNONA.FONTES.COBOL(JCOMPJOB) - 01.42          Columns 00001 00072
000019 //LKED   EXEC PGM=HEWL,COND=(4,LT,COBOL),REGION=1024K
000020 //SYSLIB  DD  DSNAME=&LIBPRFX..SCEELKED,DISP=SHR
000021 //          DD  DSN=CSF.SCSFMOD0,DISP=SHR
000022 //          DD  DSN=IBMUSER.PGMS.LOADLIB,DISP=SHR
000023 //SYSPRINT DD  SYSOUT=*
000024 //SYSLIN  DD  DSNAME=&&LOADSET,DISP=(OLD,DELETE)
000025 //          DD  DDNAME=SYSIN
000026 //SYSLMOD DD  DSN=FUTURE.LMODUL.COBOL(EXER0001),DISP=SHR
000027 //SYSUT1  DD  UNIT=SYSDA,SPACE=(TRK,(10,10))
000028 //STEPLIB DD  DSNAME=&LIBPRFX..SCEERUN,DISP=SHR
000029 //SYSPRINT DD  SYSOUT=A
000030 //CEEDUMP DD  SYSOUT=*
000031 //SYSUDUMP DD  SYSOUT=*
000032 //SYSOUT   DD  SYSOUT=A
000033 //          PEND
000034 //COBGO    EXEC IGYWCLG
000035 //COBOL.SYSIN DD DSN=ALUNONA.FONTES.COBOL(EXER0001),DISP=SHR
***** ***** Bottom of Data *****

Command ==>          Scroll ==> PAGE      F1=Help
F3=Exit      F5=Rfind   F6=Rchange  F12=Cancel
```

Digite na linha de comando **SUBMIT** ou **SUB<ENTER>**.

```
File Edit Confirm Menu Utilities Compilers Test Help
-----
EDIT          ALUNONA.FONTES.COBOL(JCOMPJOB) - 01.42          Columns 00001 00072
000019 //LKED   EXEC PGM=HEWL,COND=(4,LT,COBOL),REGION=1024K
000020 //SYSLIB  DD  DSNAME=&LIBPRFX..SCEELKED,DISP=SHR
000021 //          DD  DSN=CSF.SCSFMOD0,DISP=SHR
000022 //          DD  DSN=IBMUSER.PGMS.LOADLIB,DISP=SHR
000023 //SYSPRINT DD  SYSOUT=*
000024 //SYSLIN  DD  DSNAME=&&LOADSET,DISP=(OLD,DELETE)
000025 //          DD  DDNAME=SYSIN
000026 //SYSLMOD DD  DSN=FUTURE.LMODUL.COBOL(EXER0001),DISP=SHR
000027 //SYSUT1  DD  UNIT=SYSDA,SPACE=(TRK,(10,10))
000028 //STEPLIB DD  DSNAME=&LIBPRFX..SCEERUN,DISP=SHR
000029 //SYSPRINT DD  SYSOUT=A
000030 //CEEDUMP DD  SYSOUT=*
000031 //SYSUDUMP DD  SYSOUT=*
000032 //SYSOUT   DD  SYSOUT=A
000033 //          PEND
000034 //COBGO    EXEC IGYWCLG
000035 //COBOL.SYSIN DD DSN=ALUNONA.FONTES.COBOL(EXER0001),DISP=SHR
***** ***** Bottom of Data *****
```

Command ==> **SUB** Scroll ==> PAGE F1=Help
F3=Exit F5=Rfind F6=Rchange F12=Cancel

Mensagem na tela de job submetido.

```
IKJ56250I JOB JCOMPJOB(JOB06081) SUBMITTED  
***
```

Tecla <ENTER>.

```
23.01.17 JOB06081 $HASPL65 JCOMPJOB ENDED AT N1 MAXCC=8 CN(INTERNAL)  
***
```

Tecla <ENTER>.

Podemos observar que o return code MAXCC=8;

O compilador indica ao programador se deu erro ou não através do Return Code 'retornando um código', veremos abaixo;

MAXCC=0 → indica que não houve erro.

MAXCC=4 → indica que existe alguns comentários do compilador,mas não houve erro.

MAXCC=8 → indica que houve erro de compilação é necessário à correção.

MAXCC=12 → indica que houve erro grave de compilação é necessário à correção.

Digite **START** na linha de comando <ENTER> para abrir uma janela,vamos na tela chamada spool editar o compilador JCOMPJOB e ver a linha que está o erro no programa.

```
File Edit Confirm Menu Utilities Compilers Test Help  
-----  
EDIT ALUNONA.FONTES.COBOL(JCOMPJOB) - 01.42 Columns 00001 00072  
000019 //LKED EXEC PGM=HEWL,COND=(4,LT,COBOL),REGION=1024K  
000020 //SYSLIB DD DSN=CSF.LIBPRFX..SCEELKED,DISP=SHR  
000021 // DD DSN=CSF.SCSFMOD0,DISP=SHR  
000022 // DD DSN=IBMUSER.PGMS.LOADLIB,DISP=SHR  
000023 //SYSRINT DD SYSOUT=*  
000024 //SYSLIN DD DSN=CSF.LOADSET,DISP=(OLD,DELETE)  
000025 // DD DDNAME=SYSIN  
000026 //SYSLMOD DD DSN=FUTURE.LMODUL.COBOL(EXER0001),DISP=SHR  
000027 //SYSUT1 DD UNIT=SYSDA,SPACE=(TRK,(10,10))  
000028 //STEPLIB DD DSN=CSF.LIBPRFX..SCEERUN,DISP=SHR  
000029 //SYSRINT DD SYSOUT=A  
000030 //CEEDUMP DD SYSOUT=*  
000031 //SYSUDUMP DD SYSOUT=*  
000032 //SYSOUT DD SYSOUT=A
```

```
000033 //          PEND
000034 //COBGO      EXEC  IGYWCLG
000035 //COBOL.SYSIN DD DSN=ALUNONA.FONTES.COBOL(EXER0001),DISP=SHR
***** ***** Bottom of Data *****

Command ==> START          Scroll ==> PAGE      F1=Help
F3=Exit      F5=Rfind      F6=Rchange  F12=Cancel
```

Digite na Linha de comando opção SD.ST <ENTER>.

```
                                CUSTOMPAC MASTER APPLICATION MENU
OPTION ==> SD.ST          SCROLL ==> PAGE

                                USERID - ALUNONA
                                TIME   - 23:13

IS ISMF      - Interactive Storage Management Facility
P  PDF       - ISPF/Program Development Facility
IP IPCS      - Interactive Problem Control Facility
OS SUPPORT   - OS/390 ISPF System Support Options
OU USER     - OS/390 ISPF User Options
SM SMP/E    - SMP/E Dialogs
IC ICSF     - Integrated Cryptographic Service Facility
SD SDSF     - System Display and Search Facility
R  RACF     - Resource Access Control Facility
HC HCD      - Hardware Configuration Definition
BMB BMR BLD  - BookManager Build (Create Online Documentation)
BMR BMR READ - BookManager Read (Read Online Documentation)
BMI BMR INDX - BookManager Read (Create Bookshelf Index)
X  EXIT     - Terminate ISPF using list/log defaults

F1=HELP      F2=SPLIT      F3=END      F4=RETURN      F5=RFIN D      F6=RCHANGE      F7=UP
F8=DOWN      F9=SWAP       F10=LEFT   F11=RIGHT     F12=RETRIEVE
```

Cursor na opção FILTER <ENTER>.

```
Display F|filter View Print Options Help
-----
SDSF STATUS DISPLAY ALL CLASSES          LINE 1-1 (1)
NP  JOBNAME  JOBID   OWNER   PRTY QUEUE   C  POS  SAFF  ASYS STATUS
    ALUNONA  TSU06080 ALUNONA  15 EXECUTION  SYS1  SYS1
```

```
COMMAND INPUT ==>
F1=HELP      F2=SPLIT      F3=END      F4=RETURN      F5=IFIND      F6=BOOK      F7=UP
F8=DOWN      F9=SWAP       F10=LEFT   F11=RIGHT     F12=RETRIEVE
```

Digite opção **2** <ENTER>.

```

Display Filter View Print Options Help
-----
SDSF STA | 2 | 1. Filter... | LINE 1-1 (1)
NP JOB | | 2. Prefix of jobname... | E C POS SAFF ASYS STATUS
ALU | | 3. Owner... | UTION SYS1 SYS1
| | 4. Destination...
| | 5. System name...
| | 6. Change APPC to OFF
-----

```

COMMAND INPUT ==>> SCROLL ==>> PAGE
 F1=HELP F2=SPLIT F3=END F4=RETURN F5=IFIND F6=BOOK

Digite * <ENTER>.

```

Display Filter View Print Options Help
-----
SDSF STA | Prefix of Jobname | E 1-1 (1)
NP JOB | | FF ASYS STATUS
ALU | Type a prefix to limit jobs on the DA, H, | S1 SYS1
| I, O and ST panels.
| * | (string, may include * and %)
| F1=Help F2=Split F3=Cancel F9=Swap |
| F12=Cancel |
-----

```

COMMAND INPUT ==> SCROLL ==> PAGE
 F1=HELP F2=SPLIT F3=END F4=RETURN F5=IFIND F6=BOOK

Podemos visualizar tudo que está sendo rodado no spool.

```

Display Filter View Print Options Help
-----
SDSF STATUS DISPLAY ALL CLASSES LINE 1-16 (23)
NP JOBNAME JOBID OWNER PRTY QUEUE C POS SAFF ASYS STATUS
ALUNONA TSU06080 ALUNONA 15 EXECUTION SYS1 SYS1
RACF STC06048 IBMUSER 15 EXECUTION SYS1 SYS1
SYSLOG STC06051 +MASTER+ 15 EXECUTION SYS1 SYS1
VTAM STC06043 Y 15 EXECUTION SYS1 SYS1
INIT STC06047 Y 15 EXECUTION SYS1 SYS1
BPXAS STC06046 Y 15 EXECUTION SYS1 SYS1
INIT STC06050 Y 15 EXECUTION SYS1 SYS1
INIT STC06049 Y 15 EXECUTION SYS1 SYS1
INIT STC06052 Y 15 EXECUTION SYS1 SYS1
TSO STC06053 Y 15 EXECUTION SYS1 SYS1
TCPIP STC06054 OMVSKERN 15 EXECUTION SYS1 SYS1
$MASCOMM STC01874 15 PRINT A 1
IBMUSER TSU06066 IBMUSER 1 PRINT 2
ALUNOA1 TSU06069 ALUNOA1 1 PRINT 3
JCOMPCOB JOB06071 ALUNOJ2 1 PRINT C 4
ALUNOJ2C JOB06072 ALUNOJ2 1 PRINT A 5
COMMAND INPUT ==> SCROLL ==> PAGE
F1=HELP F2=SPLIT F3=END F4=RETURN F5=IFIND F6=BOOK F7=UP
F8=DOWN F9=SWAP F10=LEFT F11=RIGHT F12=RETRIEVE
  
```

Cursor na opção FILTER <ENTER>. Digite opção 3 <ENTER>.

```

Display Filter View Print Options Help
-----
SDSF STA 3 1. Filter... | LINE 1-16 (23)
NP JOB | 2. Prefix of jobname... | E C POS SAFF ASYS STATUS
ALU | 3. Owner... | UTION SYS1 SYS1
RAC | 4. Destination... | UTION SYS1 SYS1
SYS | 5. System name... | UTION SYS1 SYS1
VTA | 6. Change APPC to OFF | UTION SYS1 SYS1
INI | ----- | UTION SYS1 SYS1
BPXAS STC06046 Y 15 EXECUTION SYS1 SYS1
INIT STC06050 Y 15 EXECUTION SYS1 SYS1
INIT STC06049 Y 15 EXECUTION SYS1 SYS1
  
```



```

INIT      STC06052 Y          15 EXECUTION      SYS1  SYS1
TSO       STC06053 Y          15 EXECUTION      SYS1  SYS1
TCPIP    STC06054 OMVSKERN   15 EXECUTION      SYS1  SYS1
$MASCOMM STC01874           15 PRINT          A    1
IBMUSER  TSU06066 IBMUSER    1 PRINT          2
ALUNOA1  TSU06069 ALUNOA1    1 PRINT          3
JCOMPJOB JOB06071 ALUNOJ2    1 PRINT          C    4
ALUNOJ2C JOB06072 ALUNOJ2    1 PRINT          A    5

```

```

COMMAND INPUT ==>                                SCROLL ==> PAGE
F1=HELP      F2=SPLIT      F3=END          F4=RETURN      F5=IFIND      F6=BOOK

```

Digite o seu aluno, visualizaremos apenas o compilador do aluno <ENTER>.

```

Display Filter View Print Options Help
-----
SDSF STA |                               Owner | E 1-16 (23)
NP  JOB |                               | FF ASYS STATUS
ALU | Type an owner to limit jobs on the DA, H, | S1  SYS1
RAC | I, O and ST panels. | S1  SYS1
SYS | | S1  SYS1
VTA | ALUNONA (string, may include * and %) | S1  SYS1
INI | | S1  SYS1
BPX | F1=Help  F2=Split  F3=Cancel  F9=Swap | S1  SYS1
INI | F12=Cancel | S1  SYS1
INI | | S1  SYS1
-----
INIT      STC06052 Y          15 EXECUTION      SYS1  SYS1
TSO       STC06053 Y          15 EXECUTION      SYS1  SYS1
TCPIP    STC06054 OMVSKERN   15 EXECUTION      SYS1  SYS1
$MASCOMM STC01874           15 PRINT          A    1
IBMUSER  TSU06066 IBMUSER    1 PRINT          2
ALUNOA1  TSU06069 ALUNOA1    1 PRINT          3
JCOMPJOB JOB06071 ALUNOJ2    1 PRINT          C    4
ALUNOJ2C JOB06072 ALUNOJ2    1 PRINT          A    5

COMMAND INPUT ==>                                SCROLL ==> PAGE      F1=HELP
F2=SPLIT      F3=END          F4=RETURN      F5=IFIND      F6=BOOK

```

Podemos observar que estamos visualizando apenas referente a nosso aluno.

```

Display Filter View Print Options Help
-----
SDSF STATUS DISPLAY ALL CLASSES                               LINE 1-2 (2)
NP  JOBNAME  JOBID  OWNER  PRTY  QUEUE  C  POS  SAFF  ASYS  STATUS
ALUNONA  TSU06080  ALUNONA  15  EXECUTION  SYS1  SYS1
JCOMPJOB JOB06081  ALUNONA  1  PRINT      C    12

```

COMMAND INPUT ==> SCROLL ==> PAGE
 F1=HELP F2=SPLIT F3=END F4=RETURN F5=IFIND F6=BOOK F7=UP
 F8=DOWN F9=SWAP F10=LEFT F11=RIGHT F12=RETRIEVE

Seleção do job no spool é feita pelo **S** → select, tecla **S** <ENTER>.

```

Display Filter View Print Options Help
-----
SDSF STATUS DISPLAY ALL CLASSES LINE 1-2 (2)
NP JOBNAME JOBID OWNER PRTY QUEUE C POS SAF ASYS STATUS
ALUNONA TSU06080 ALUNONA 15 EXECUTION SYS1 SYS1 S
JCOMPJOB JOB06081 ALUNONA 1 PRINT C 12
  
```

COMMAND INPUT ==> SCROLL ==> PAGE
 F1=HELP F2=SPLIT F3=END F4=RETURN F5=IFIND F6=BOOK
 F7=UP F8=DOWN F9=SWAP F10=LEFT F11=RIGHT F12=RETRIEVE

Digite na linha de comando **M** e tecla PF8.

```

Display Filter View Print Options Help
-----
SDSF OUTPUT DISPLAY JCOMPJOB JOB06081 DSID 2 LINE 0 COLUMNS 02- 81
COMMAND INPUT ==> M SCROLL ==> PAGE
***** TOP OF DATA *****
JES2 JOB LOG -- SYSTEM SYS1 -- N
  
```

```

23.01.14 JOB06081 ---- MONDAY, 23 AUG 2010 ---- 23.01.14
JOB06081 IRR010I USERID ALUNONA IS ASSIGNED TO THIS JOB. 23.01.14
JOB06081 IEF677I WARNING MESSAGE(S) FOR JOB JCOMPJOB ISSUED 23.01.15
JOB06081 ICH70001I ALUNONA LAST ACCESS AT 22:58:54 ON MONDAY, AUGUST 23.01.15
JOB06081 $HASP373 JCOMPJOB STARTED - INIT 3 - CLASS C - SYS SYS1 23.01.15
JOB06081 IEF403I JCOMPJOB - STARTED - TIME=23.01.15 23.01.17
JOB06081 - --TIMINGS (M 23.01.17
JOB06081 -JOBNAME STEPNAME PROCSTEP RC EXCP CONN TCB SRB 23.01.17
JOB06081 -JCOMPJOB COBGO 08 722 0 .01 .00 23.01.17
JOB06081 -JCOMPJOB COBGO FLUSH 0 0 .00 .00 23.01.17
JOB06081 IEF404I JCOMPJOB - ENDED - TIME=23.01.17 23.01.17
JOB06081 -JCOMPJOB ENDED. NAME- TOTAL TCB CPU TIM 23.01.17
JOB06081 $HASP395 JCOMPJOB ENDED -----
JES2 JOB STATISTICS -----
F1=HELP F2=SPLIT F3=END F4=RETURN F5=IFIND F6=BOOK F7=UP
F8=DOWN F9=SWAP F10=LEFT F11=RIGHT F12=RETRIEVE

```

Tecla PF7 procure a linha LineID Message code Message text, após essa linha visualizo erros do programa e 'em que linhas eles estão'.

```

WRK-STOR LOCATED AT 001290 FOR 000000AD BYTES
DSA WILL BE ALLOCATED FOR 00000120 BYTES
PF 5648-A25 IBM COBOL for OS/390 & VM 2.1.2 EXER0001 Date 08
LineID Message code Message text

17 IGYDS1082-E A period was required. A period was assumed before "SELEC 34
IGYDS1082-E A period was required. A period was assumed before "05".
Messages Total Informational Warning Error Severe Terminating
Printed: 2 2
Statistics for COBOL program EXER0001:
* Source records = 281
* Data Division statements = 33
* Procedure Division statements = 78 End of
compilation 1, program EXER0001, highest severity 8.
Return code 8
***** BOTTOM OF DATA *****
F1=HELP F2=SPLIT F3=END F4=RETURN F5=IFIND F6=BOOK F7=UP
F8=DOWN F9=SWAP F10=LEFT F11=RIGHT F12=RETRIEVE

```

Sei que linhas estão os erros, vou editar o membro EXER001.

PF9 Navegar entre duas sessões

Tecla PF9 e navegue, variando entre as telas

Na 1º tela estou com o compilador editado (JCOMPJOB) na outra com as linhas que estão os erros.

```

File Edit Confirm Menu Utilities Compilers Test Help
-----
EDIT ALUNONA.FONTES.COBOL(JCOMPJOB) - 01.42 Columns 00001 00072

```

```

000016 //SYSUT5 DD UNIT=SYSDA,SPACE=(CYL,(1,1))
000017 //SYSUT6 DD UNIT=SYSDA,SPACE=(CYL,(1,1))
000018 //SYSUT7 DD UNIT=SYSDA,SPACE=(CYL,(1,1))
000019 //LKED EXEC PGM=HEWL,COND=(4,LT,COBOL),REGION=1024K
000020 //SYSLIB DD DSNNAME=&LIBPRFX..SCEELKED,DISP=SHR
000021 // DD DSN=CSF.SCSFMOD0,DISP=SHR
000022 // DD DSN=IBMUSER.PGMS.LOADLIB,DISP=SHR
000023 //SYSPRINT DD SYSOUT=*
000024 //SYSLIN DD DSNNAME=&&LOADSET,DISP=(OLD,DELETE)
000025 // DD DDNAME=SYSIN
000026 //SYSLMOD DD DSN=FUTURE.LMODUL.COBOL(EXER0001),DISP=SHR
000027 //SYSUT1 DD UNIT=SYSDA,SPACE=(TRK,(10,10))
000028 //STEPLIB DD DSNNAME=&LIBPRFX..SCEERUN,DISP=SHR
000029 //SYSPRINT DD SYSOUT=A
000030 //CEEDUMP DD SYSOUT=*
000031 //SYSUDUMP DD SYSOUT=*
000032 //SYSOUT DD SYSOUT=A
000033 // PEND
Command ==>
F3=Exit F5=Rfind F6=Rchange F12=Cancel
Scroll ==> PAGE F1=Help

```

Tecla PF3

Edite o membro.

```

Menu Functions Confirm Utilities Help
-----
EDIT ALUNONA.FONTES.COBOL Row 00001 of 00005
Name Prompt VV MM Changed Size Init Mod ID
EXER0001 *Edited 01.09 10/08/23 22:48 281 198 281 ALUNOJ2
JCOMPJOB *Edited 01.42 10/08/23 22:35 35 35 0 ALUNOJ2
TESTE222 01.00 10/08/17 16:37 5 5 0 ALUNOJ2
TESTE555 01.00 10/08/17 16:37 5 5 0 ALUNOJ2
TESTE777 01.00 10/08/17 16:37 5 5 0 ALUNOJ2
**End**

```

```

Command ==>
F3=Exit F10=Actions F12=Cancel
Scroll ==> PAGE F1=Help

```

Tecla PF9 e navegue, variando entre as telas.

Tire os erros que aprenderemos na apostila de COBOL e vamos submeter novamente o job de compilação.

Editaremos novamente o compilador JCOMPCOB.

Menu Functions Confirm Utilities Help

```
-----
EDIT          ALUNONA.FONTES.COBOL                      Row 00001 of 00005
      Name      Prompt      VV MM      Changed      Size  Init  Mod  ID
-----
E JCOMPCOB *Edited      01.10 10/08/24 00:14    281  198  281 ALUNONA
TESTE222      01.00 10/08/17 16:37      5    5    0 ALUNOJ2
TESTE555      01.00 10/08/17 16:37      5    5    0 ALUNOJ2
TESTE777      01.00 10/08/17 16:37      5    5    0 ALUNOJ2
**End**
```

Command ==>

F1=Help F3=Exit F10=Actions F12=Cancel

Scroll ==> PAGE

Submeter novamente, SUB<ENTER>.

File Edit Confirm Menu Utilities Compilers Test Help

```
-----
EDIT          ALUNONA.FONTES.COBOL(JCOMPCOB) - 01.42      Columns 00001 00072
***** ***** Top of Data *****
==MSG> -Warning- The UNDO command is not available until you change your edit profile using the command RECOVERY ON. ==MSG>
000001 //JCOMPCOB JOB IBMUSERB,MSGCLASS=A,CLASS=C,NOTIFY=ALUNONA
000002 //IGYWCLG PROC SYSLBLK=3200,
000003 //          LIBPRFX='CEE'
000004 //*
000005 //COBOL EXEC PGM=IGYCRCTL,REGION=2048K,
000006 //          PARM=(LIST,MAP,APOST,DYNAM)
000007 //SYSPRINT DD SYSOUT=*
000008 //STEPLIB DD DISP=SHR,DSN=IGY.V2R1M0.SIGYCOMP
000009 //SYSLIN DD DSNAME=&&LOADSET,UNIT=SYSDA,
000010 //          DISP=(MOD,PASS),SPACE=(TRK,(3,3)),
000011 //          DCB=(BLKSIZE=&SYSLBLK)
000012 //SYSUT1 DD UNIT=SYSDA,SPACE=(CYL,(1,1))
000013 //SYSUT2 DD UNIT=SYSDA,SPACE=(CYL,(1,1))
000014 //SYSUT3 DD UNIT=SYSDA,SPACE=(CYL,(1,1))
000015 //SYSUT4 DD UNIT=SYSDA,SPACE=(CYL,(1,1))
Command ==> SUB
F1=Help F3=Exit F5=Rfind F6=Rchange F12=Cancel
```

Mensagem na tela de job submetido.

```
IKJ56250I JOB JCOMPCOB(JOB06083) SUBMITTED
***
```

Tecla <ENTER>.

00.22.53 JOB06083 \$HASP165 JCOMPCOB ENDED AT N1 MAXCC=0 CN (INTERNAL) ***

Foi gerado um módulo carga em linguagem máquina.