

**O FUTURO NÃO PÁRA.  
VOCÊ VAI ESPERAR ELE PASSAR?**



**DESDE 1999**



**8 ANOS**

**+ DE 900 ALUNOS FORMADOS**





**EM TODO LUGAR**

**TEM PROFISSIONAIS  
FORMADOS PELA  
FUTURE SCHOOL**





**DESDE 1999**

```
1: 192.168.0.47 - TN3270 Plus
Host Edit View Setup Macros Internet Help
Display Filter View Print Options Help
-----
SDSF STATUS DISPLAY ALL CLASSES          LINE 1-19 (19)
COMMAND INPUT ==>
SCROLL ==> CSR
NP  JOBNAME  JOBID  OWNER  PRTY  QUEUE  C  POS  SAFF  ASYS  STATUS
DB2DFEFE JOB09411 IBMUSER  9  EXECUTION  N  1
ALUNOU9  TSU09543 ALUNOU9  15 EXECUTION  SYS1 SYS1
ALUNOU0  TSU09544 ALUNOU0  15 EXECUTION  SYS1 SYS1
ALUNOU8  TSU09545 ALUNOU8  15 EXECUTION  SYS1 SYS1
ALUNOU7  TSU09546 ALUNOU7  15 EXECUTION  SYS1 SYS1
IBMUSER  TSU09557 IBMUSER  15 EXECUTION  SYS1 SYS1
RACF     STC09516 IBMUSER  15 EXECUTION  SYS1 SYS1
SYSLOG   STC09520 +MASTER+ 15 EXECUTION  SYS1 SYS1
VTAM     STC09511 Y         15 EXECUTION  SYS1 SYS1
BXPAS    STC09514 Y         15 EXECUTION  SYS1 SYS1
INIT     STC09515 Y         15 EXECUTION  SYS1 SYS1
INIT     STC09519 Y         15 EXECUTION  SYS1 SYS1
INIT     STC09517 Y         15 EXECUTION  SYS1 SYS1
INIT     STC09518 Y         15 EXECUTION  SYS1 SYS1
TSO      STC09521 Y         15 EXECUTION  SYS1 SYS1
TCP/IP   STC09522 OMVSKERN 15 EXECUTION  SYS1 SYS1
$MASCOMM STC04513          15 PRINT      A  1
JUEXE004 JOB09547 ALUNOU8  1  PRINT      A  2
JUEXE004 JOB09548 ALUNOU8  1  PRINT      A  3
Connected to 192.168.0.47 port 3270 00:00.031 04,21 IBM-3278-2-E NUM
```

# METODOLOGIA DIFERENCIADA

PARA NÓS, A PRÁTICA É FUNDAMENTAL





**AQUI O ALUNO**

**APRENDE CONCEITOS  
ATRAVES DE APOSTILAS**

**DEPOIS APLICA NA PRÁTICA**



O ALUNO  
FUTURE SCHOOL  
**ENTENDE** PARA  
QUE SERVE O QUE  
**APRENDE** AQUI







**E APLICA NA HORA CERTA  
EM QUALQUER LUGAR**

**PORQUE PODE PRATICAR EM QUALQUER LUGAR**

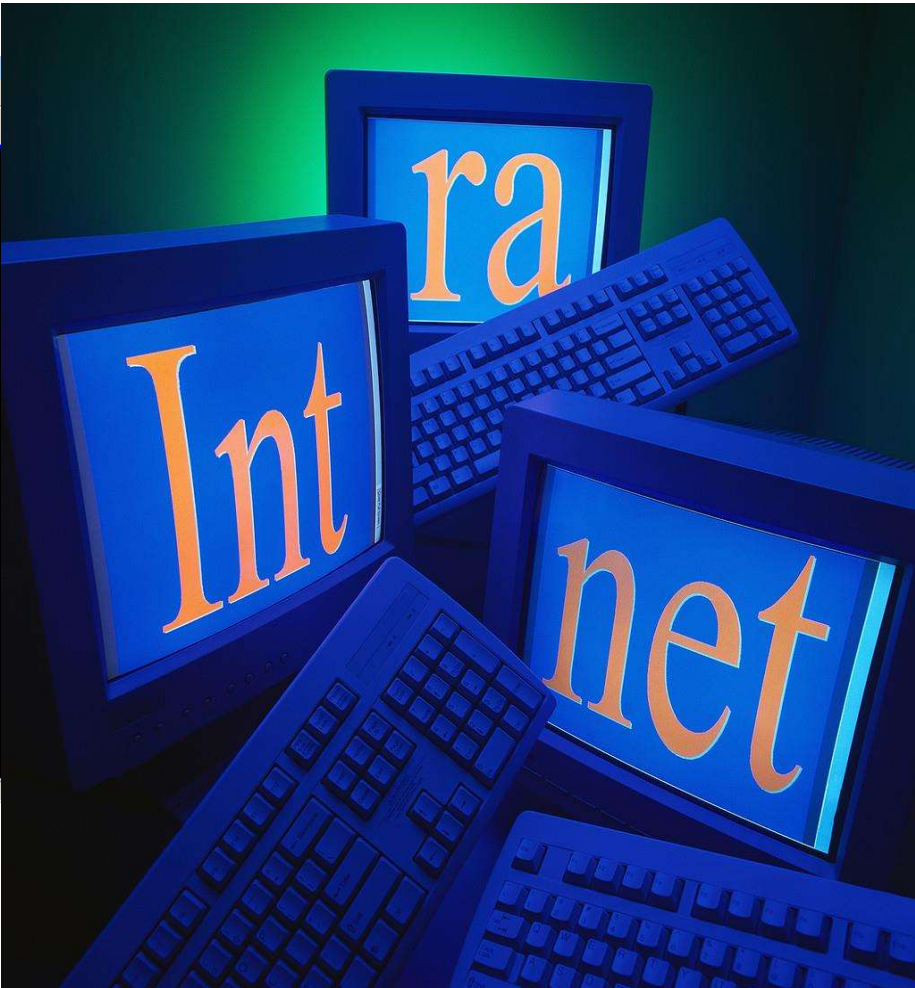


```
1: 192.168.0.47 - TN3270 Plus
Host Edit View Setup Macros Internet Help
Seja Muito Bem Vindo...
FUTURE SCHOOL LTDA.
      SSSSSS      3333333  9999999  0000000
SS      33  33  99  99  00  00
SS      33  33  99  99  00  00
SSSS      33333  9999999  00  00
SS      33      99  00  00  00
SS      33  33  99  99  00  00
SSSSSS      3333333  9999999  0000000

Terminal name = LCL706           Network-qualified Name = P390.LCL706
Sscpname = P390SSCP             Network-id = P390

Customized Solutions
08/390 Pre-config System - Release 2.7.0

==> Digite : L ALUNOX <enter>
```



# ACESSO ONLINE AO AMBIENTE MAINFRAME





**DESDE 1999**

**INSTRUTORES  
ATUANTES EM  
GRANDES  
CONSULTORIAS  
E EMPRESAS**





**DESDE 1999**

# FAÇA DIFERENTE



**APRENDA O QUE AS  
FACULDADES NÃO ENSINAM**

**E AS EMPRESAS AINDA  
PRECISAM**



# **CURSOS ON-LINE**

**VOCE SE PROGRAMA PARA AULAS VIA WEB**

**Entre e Informe-se!**



**COBOL**







**JCL**





**TSO**

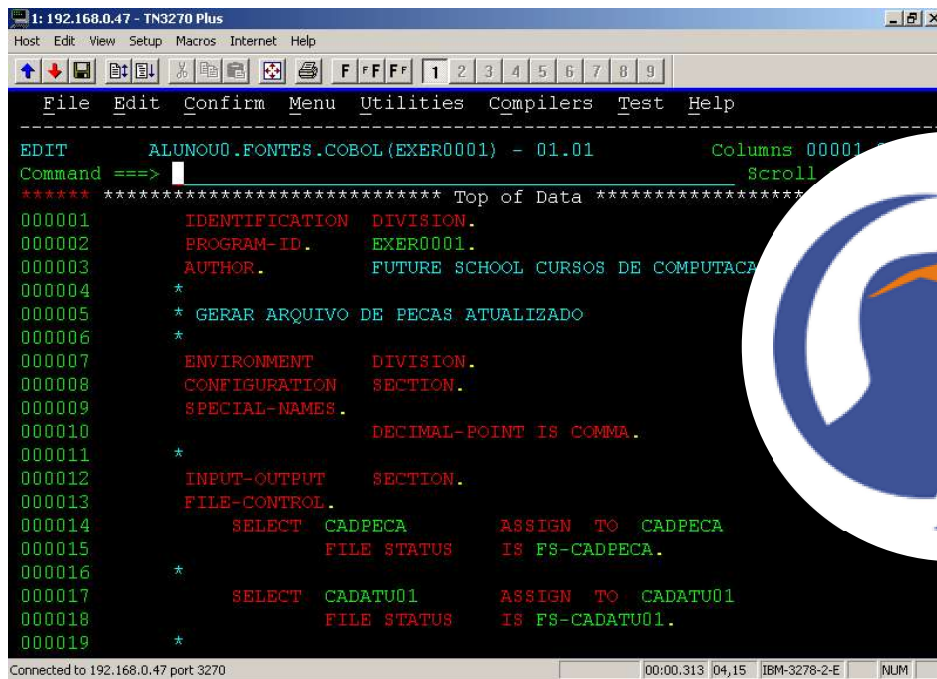




# LÓGICA



## Pacote BATCH – 4 módulos



```
1: 192.168.0.47 - TN3270 Plus
Host Edit View Setup Macros Internet Help
File Edit Confirm Menu Utilities Compilers Test Help
EDIT ALUNOU0.FONTES.COBOL(EXER0001) - 01.01 Columns 00001
Command ==> Scroll
***** ***** Top of Data *****
000001 IDENTIFICATION DIVISION.
000002 PROGRAM-ID. EXER0001.
000003 AUTHOR. FUTURE SCHOOL CURSOS DE COMPUTACA
000004 *
000005 * GERAR ARQUIVO DE PECAS ATUALIZADO
000006 *
000007 ENVIRONMENT DIVISION.
000008 CONFIGURATION SECTION.
000009 SPECIAL-NAMES .
000010 DECIMAL-POINT IS COMMA.
000011 *
000012 INPUT-OUTPUT SECTION.
000013 FILE-CONTROL .
000014 SELECT CADPECA ASSIGN TO CADPECA
000015 FILE STATUS IS FS-CADPECA.
000016 *
000017 SELECT CADATU01 ASSIGN TO CADATU01
000018 FILE STATUS IS FS-CADATU01.
000019 *
Connected to 192.168.0.47 port 3270 00:00.313 04,15 IBM-3278-2-E NUM
```

**COBOL**

**JCL**

**TSO**

**LÓGICA**

**80hs**





**CICS**





**DB2**





**V SAM**





**BMS**





**CICS**

**DB2**

**VSAM**

**BMS**



## Pacote ON-LINE – 4 módulos

A screenshot of a TN3270 Plus terminal window. The window title is "1: 192.168.0.47 - TN3270 Plus". The menu bar includes "Host", "Edit", "View", "Setup", "Macros", "Internet", and "Help". The main menu has "File", "Edit", "Confirm", "Menu", "Utilities", "Compilers", "Test", and "Help". The terminal content shows a COBOL program header for "ALUNOUD.FONTES.COBOL (EXER0001) - 01.01" with columns 00001 and 00072. It includes a "Top of Data" section with fields for IDENTIFICATION, DIVISION, PROGRAM-ID (EXER0001), and AUTHOR (FUTURE SCHOOL CURSOS DE COMPUTACAO). Below this is an "INPUT-OUTPUT SECTION" with "FILE-CONTROL" containing two SELECT statements: "SELECT CADPECA ASSIGN TO CADPECA FILE STATUS IS FS-CADPECA." and "SELECT CADATU01 ASSIGN TO CADATU01 FILE STATUS IS FS-CADATU01." The status bar at the bottom shows "Connected to 192.168.0.47 port 3270" and "00:00.313 | 04,15 | IBM-3278-2-E | NUM".

**60hs**



**APRENDA TAMBÉM**



**JAVA**

**HTML - CSS**

**SQL SERVER**



**O FUTURO NÃO PÁRA.  
VOCÊ VAI ESPERAR ELE PASSAR?**

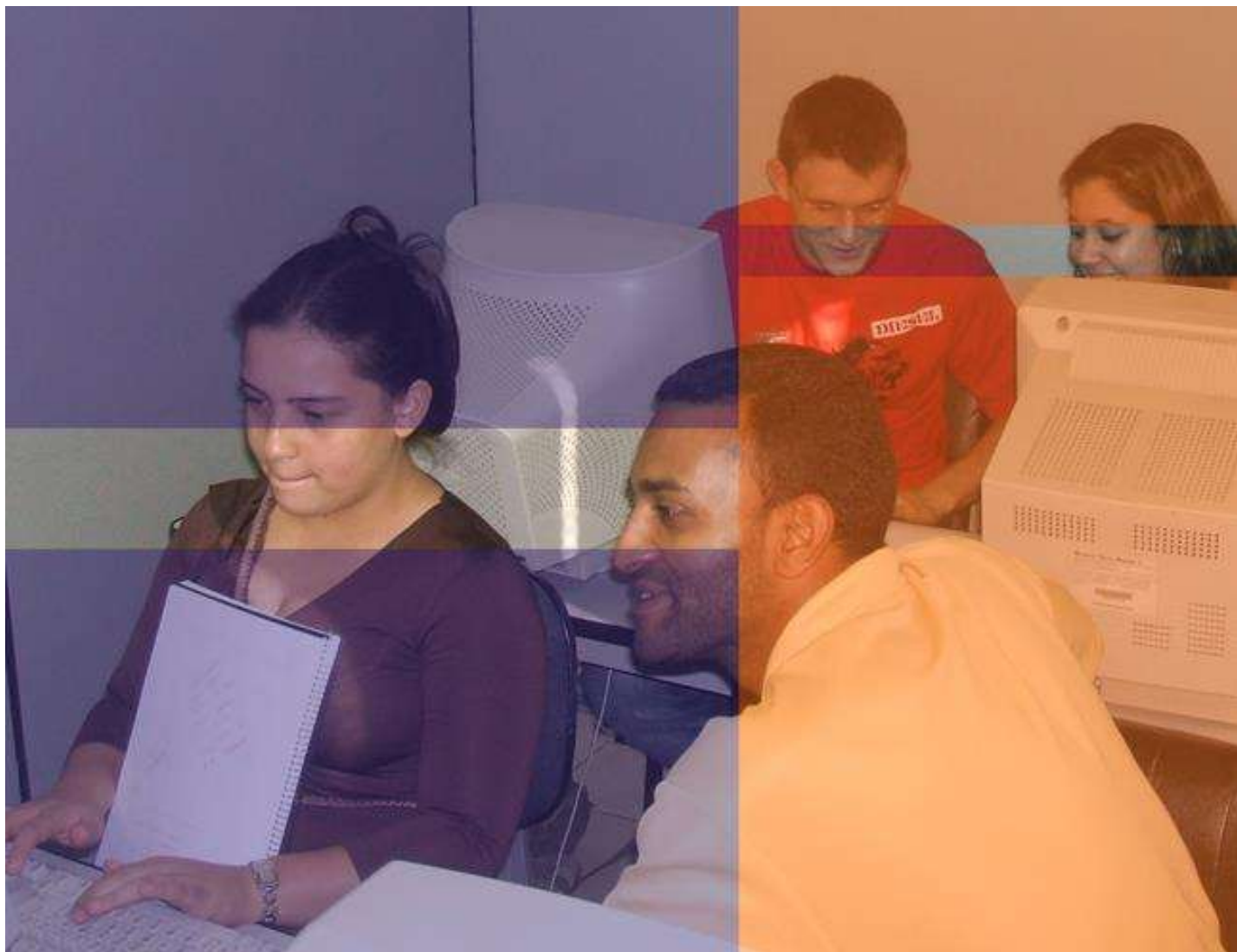
# Cursos de Mainframe

Você programa suas aulas.

**Informe-se!**



**DESDE 1999**



**AQUI VOCÊ ESTÁ EM CASA**

